

Sunnybrook Health Sciences Centre

REG
397/11

2012 ENERGY & GREENHOUSE GAS REPORTING



► 2012 Energy & Greenhouse Gas Reporting

Regulation 397/11 of the Ontario Green Energy Act requires all public agencies, including hospitals, to report their annual energy consumption and greenhouse gas emissions of designated operations.

This includes facilities used for hospital purposes and also administrative offices and related facilities. As Sunnybrook has many multi-use hospital and administrative offices/other related facilities, the Sunnybrook facilities have been broken down using 4 operation types:

- Acute Hospital Facilities
 - Chronic/LTC Hospital Facilities
 - Research Hospital Facilities
 - Administrative Offices and Other Related Facilities
-

Sunnybrook Health Sciences Centre – Main Campus

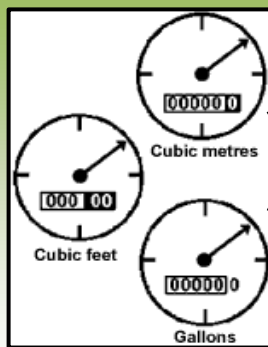


No. of Buildings: 17

Gross Area: 2,716,022.63 ft²
(252,326.76 m²)

Hospital Space Use Breakdown:

- 49.5% Acute Hospital
- 16.1% Chronic/LTC Hospital
- 12.6% Research Hospital
- 21.9% Administrative Office/Other



2012 METER READINGS:

ELECTRICITY: 70,286,368 kWh

NATURAL GAS: 10,653,782 m³

Avg. Energy Use Intensity: 2.18 GJ/m²

The hospital's Energy Use Intensity is calculated by taking the total energy consumed in 2011 (measured in GJ) and dividing it by the total floor space of the hospital.

GHG Emissions: 26,892,632 kg

The hospital's Greenhouse Gas Emissions are calculated by taking the total of each energy source consumed in 2011 and converting it to kg of CO₂ emitted based on Ontario's energy source emission factors for each energy source.

Holland Orthopaedic & Arthritic Centre – Holland Campus

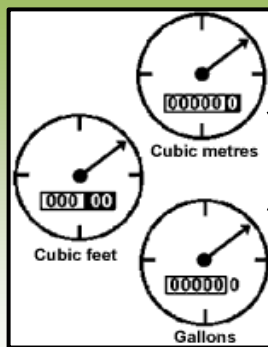


No. of Buildings: 1

Gross Area: 148,229.15 ft²
(13,770.94 m²)

Hospital Space Use Breakdown:

72% Acute Hospital
28% Administrative Office/Other



2012 METER READINGS:

ELECTRICITY: 5,186,222 kWh

NATURAL GAS: 500,848 m³

Avg. Energy Use Intensity: 2.29 GJ/m²

The hospital's Energy Use Intensity is calculated by taking the total energy consumed in 2011 (measured in GJ) and dividing it by the total floor space of the hospital.

GHG Emissions: 1,445,002 kg

The hospital's Greenhouse Gas Emissions are calculated by taking the total of each energy source consumed in 2011 and converting it to kg of CO₂ emitted based on Ontario's energy source emission factors for each energy source.

St. John's Rehabilitation Centre – St. John's Campus

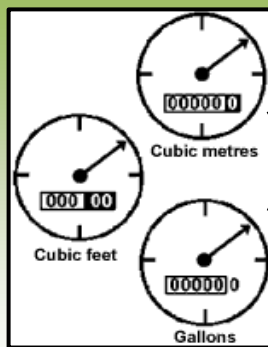


No. of Buildings: 5

Gross Area: 225,971 ft²
(20,933.39 m²)

Hospital Space Use Breakdown:

- 32% Acute Hospital
- 32% Chronic/LTC Hospital
- 36% Administrative Office/Other
(including food services)



2012 METER READINGS:

ELECTRICITY: 3,191,185 kWh

NATURAL GAS: 593,728 m³

Avg. Energy Use Intensity: 1.33 GJ/m²

The hospital's Energy Use Intensity is calculated by taking the total energy consumed in one year (measured in GJ) and dividing it by the total floor space of the hospital.

GHG Emissions: 1,395,387 kg

The hospital's Greenhouse Gas Emissions are calculated by taking the total of each energy source consumed in 2011 and converting it to kg of CO₂ emitted based on Ontario's energy source emission factors for each energy source.

Appendix – 2012 Reporting Template

*The energy used per facility and operation has been determined by prorating the energy use by the floor areas as Sunnybrook does not have individual metering at each facility.

Confirm consecutive 12-mth period (mth-yr to mth-yr)		January 2012 - December 2012				
Sector		Public Hospital				
Agency Sub-sector		AcuteChronic				
Organization Name		Toronto Sunnybrook health Sciences Centre				
Operation Name	Operation Type	Address	City	Postal Code	Total Floor Area	Unit
<i>Stephenson Building</i>	<i>Administrative offices and related facilities</i>	<i>2160 Yonge Street</i>	<i>Toronto</i>	<i>M7A 2G5</i>	<i>135034</i>	<i>Square meters</i>
SB - Bayview - A - (88% Acute Hospital)	Facilities used for hospital purposes	2075 Bayview	Toronto	M4N 3M5	154402.72	Square feet
SB - Bayview - A - (5% Hospital Research)	Facilities used for hospital purposes	2076 Bayview	Toronto	M4N 3M5	8772.88	Square feet
SB - Bayview - A - (7% Office & Related)	Administrative offices and related facilities	2077 Bayview	Toronto	M4N 3M5	12282.03	Square feet
SB - Bayview - B - (84% Acute Hospital)	Facilities used for hospital purposes	2078 Bayview	Toronto	M4N 3M5	85180.89	Square feet
SB - Bayview - B - (16% Office & Related)	Administrative offices and related facilities	2079 Bayview	Toronto	M4N 3M5	16224.93	Square feet
SB - Bayview - C - (62% Acute Hospital)	Facilities used for hospital purposes	2080 Bayview	Toronto	M4N 3M5	122303.95	Square feet
SB - Bayview - C - (13% Hospital Research)	Facilities used for hospital purposes	2081 Bayview	Toronto	M4N 3M5	25644.38	Square feet
SB - Bayview - C - (25% Office & Related)	Administrative offices and related facilities	2082 Bayview	Toronto	M4N 3M5	49316.11	Square feet
SB - Bayview - D - (82% Acute Hospital)	Facilities used for hospital purposes	2083 Bayview	Toronto	M4N 3M5	138431.64	Square feet
SB - Bayview - D - (18% Office & Related)	Administrative offices and related facilities	2084 Bayview	Toronto	M4N 3M5	30387.43	Square feet
SB - Bayview - E - (27% Acute Hospital)	Facilities used for hospital purposes	2075 Bayview Ave	Toronto	M4N 3M5	53531.25	Square feet
SB - Bayview - E - (73% Office & Related)	Administrative offices and related facilities	2075 Bayview Ave	Toronto	M4N 3M5	144732.63	Square feet
SB - Bayview - F - (72% Acute Hospital)	Facilities used for hospital purposes	2075 Bayview Ave	Toronto	M4N 3M5	44057.06	Square feet
SB - Bayview - F - (17% Chronic Hospital)	Facilities used for hospital purposes	2075 Bayview Ave	Toronto	M4N 3M5	10402.36	Square feet
SB - Bayview - F - (11% Office & Related)	Administrative offices and related facilities	2075 Bayview Ave	Toronto	M4N 3M5	6730.94	Square feet
SB - Bayview - G - (6% Hospital Research)	Facilities used for hospital purposes	2075 Bayview Ave	Toronto	M4N 3M5	4278.9	Square feet
SB - Bayview - G - (94% Office & Related)	Administrative offices and related facilities	2075 Bayview Ave	Toronto	M4N 3M5	67036.05	Square feet
SB - Bayview - H - (46% Acute Hospital)	Facilities used for hospital purposes	2075 Bayview Ave	Toronto	M4N 3M5	61074.98	Square feet
SB - Bayview - H - (54% Office & Related)	Administrative offices and related facilities	2075 Bayview Ave	Toronto	M4N 3M5	71696.71	Square feet
SB - Bayview - J - (100% Office & Related)	Administrative offices and related facilities	2075 Bayview Ave	Toronto	M4N 3M5	22511.68	Square feet
SB - Bayview - K - (75% Chronic Hospital)	Facilities used for hospital purposes	2075 Bayview Ave	Toronto	M4N 3M5	185311.79	Square feet
SB - Bayview - K - (25% Office & Related)	Administrative offices and related facilities	2075 Bayview Ave	Toronto	M4N 3M5	61770.6	Square feet
SB - Bayview - L - (100% Chronic Hospital)	Facilities used for hospital purposes	2075 Bayview Ave	Toronto	M4N 3M5	228599.7	Square feet
SB - Bayview - M - (73% Acute Hospital)	Facilities used for hospital purposes	2075 Bayview Ave	Toronto	M4N 3M5	472709.44	Square feet
SB - Bayview - M - (21% Hospital Research)	Facilities used for hospital purposes	2075 Bayview Ave	Toronto	M4N 3M5	135984.9	Square feet
SB - Bayview - M - (6% Office & Related)	Administrative offices and related facilities	2075 Bayview Ave	Toronto	M4N 3M5	38852.83	Square feet
SB - Bayview - R - (100% Hospital Research)	Facilities used for hospital purposes	2075 Bayview Ave	Toronto	M4N 3M5	10740.8	Square feet
SB - Bayview - S - (100% Hospital Research)	Facilities used for hospital purposes	2075 Bayview Ave	Toronto	M4N 3M5	155377.09	Square feet
SB - Bayview - T - (90% Acute Hospital)	Facilities used for hospital purposes	2075 Bayview Ave	Toronto	M4N 3M5	180180.23	Square feet
SB - Bayview - T - (10% Office & Related)	Administrative offices and related facilities	2075 Bayview Ave	Toronto	M4N 3M5	20020.03	Square feet
SB - Bayview - U - (26% Acute Hospital)	Facilities used for hospital purposes	2075 Bayview Ave	Toronto	M4N 3M5	30792.59	Square feet
SB - Bayview - U - (45% Office & Related)	Administrative offices and related facilities	2075 Bayview Ave	Toronto	M4N 3M5	53294.86	Square feet
SB - Bayview - BU - (100% Chronic Hospital)	Facilities used for hospital purposes	2075 Bayview Ave	Toronto	M4N 3M5	13388.23	Square feet
SB - SJR - AGN - (33 % Acute Hospital)	Facilities used for hospital purposes	285 Cummer Ave	Toronto	M2M 2G1	9430.57	Square feet
SB - SJR - AGN - (67% Office & Related)	Administrative offices and related facilities	285 Cummer Ave	Toronto	M2M 2G1	19146.92	Square feet
SB - SJR - AGS - (100% Chronic Hospital)	Facilities used for hospital purposes	285 Cummer Ave	Toronto	M2M 2G1	71560.14	Square feet
SB - SJR - BW - (100% Office & Related)	Administrative offices and related facilities	285 Cummer Ave	Toronto	M2M 2G1	14295.29	Square feet
SB - SJR - SW - (15% Acute Hospital)	Facilities used for hospital purposes	285 Cummer Ave	Toronto	M2M 2G1	8613.55	Square feet
SB - SJR - SW - (85% Office & Related)	Administrative offices and related facilities	285 Cummer Ave	Toronto	M2M 2G1	48810.1	Square feet
SB - SJR - HE - (100% Acute Hospital)	Facilities used for hospital purposes	285 Cummer Ave	Toronto	M2M 2G1	54114.62	Square feet
SB - Holland - O - (72% Acute Hospital)	Facilities used for hospital purposes	43 Wellesley St E	Toronto	M4Y 1H1	106724.98	Square feet
SB - Holland - O - (28% Office & Related)	Administrative offices and related facilities	43 Wellesley St E	Toronto	M4Y 1H1	41504.16	Square feet

		Energy Type and Amount Purchased and Consumed						Total (calculated in webform)	
Confirm consecutive 12-mth period (mth-yr to mth-yr)		Electricity		Natural Gas		Fuel Oil 1 & 2		GHG Emissions (Kg)	Energy Intensity (ekWh/sqft)
Sector		Quantity	Unit	Quantity	Unit	Quantity	Unit		
Agency Sub-sector									
Organization Name									
Operation Name	Avg hrs/wk	Quantity	Unit	Quantity	Unit	Quantity	Unit	GHG Emissions (Kg)	Energy Intensity (ekWh/sqft)
<i>Stephenson Building</i>	70	2181065	kWh	125300	Cubic meter		Litre		
SB - Bayview - A - (88% Acute Hospital)	168	3995698.17	kWh	605655.12	Cubic Meter	0	Litre	1528814.775	67.5665929
SB - Bayview - A - (5% Hospital Research)	168	227028.31	kWh	34412.22	Cubic Meter	0	Litre	86864.47115	67.56660415
SB - Bayview - A - (7% Office & Related)	65	317839.63	kWh	48177.11	Cubic Meter	0	Litre	121610.263	67.56661656
SB - Bayview - B - (84% Acute Hospital)	168	2204346.62	kWh	334127.8	Cubic Meter	0	Litre	843416.4895	67.56659114
SB - Bayview - B - (16% Office & Related)	168	419875.54	kWh	63643.39	Cubic Meter	0	Litre	160650.7584	67.56659637
SB - Bayview - C - (62% Acute Hospital)	168	3165032.78	kWh	479745.52	Cubic Meter	0	Litre	1210989.581	67.56659277
SB - Bayview - C - (13% Hospital Research)	168	663635.91	kWh	100591.8	Cubic Meter	0	Litre	253917.1659	67.56658295
SB - Bayview - C - (25% Office & Related)	65	1276222.9	kWh	193445.78	Cubic Meter	0	Litre	488302.262	67.56659257
SB - Bayview - D - (82% Acute Hospital)	168	3582391.95	kWh	543007.49	Cubic Meter	0	Litre	1370677.545	67.56659434
SB - Bayview - D - (18% Office & Related)	65	786378.72	kWh	119196.77	Cubic Meter	0	Litre	300880.4439	67.56660273
SB - Bayview - E - (27% Acute Hospital)	168	1385303.99	kWh	209979.94	Cubic Meter	0	Litre	530038.3392	67.56658899
SB - Bayview - E - (73% Office & Related)	120	3745451.52	kWh	567723.54	Cubic Meter	0	Litre	1433066.617	67.56659297
SB - Bayview - F - (72% Acute Hospital)	168	1140126.98	kWh	172816.79	Cubic Meter	0	Litre	436229.8844	67.56658946
SB - Bayview - F - (17% Chronic Hospital)	168	269196.65	kWh	40803.97	Cubic Meter	0	Litre	102998.7337	67.56660449
SB - Bayview - F - (11% Office & Related)	65	174186.07	kWh	26402.57	Cubic Meter	0	Litre	66646.24187	67.56659489
SB - Bayview - G - (6% Hospital Research)	168	110731.08	kWh	16784.27	Cubic Meter	0	Litre	42367.40696	67.56656119
SB - Bayview - G - (94% Office & Related)	65	1734786.98	kWh	262953.45	Cubic Meter	0	Litre	663755.8339	67.56659451
SB - Bayview - H - (46% Acute Hospital)	168	1580523.77	kWh	239570.72	Cubic Meter	0	Litre	604732.3745	67.56658713
SB - Bayview - H - (54% Office & Related)	65	1855397.48	kWh	281235.2	Cubic Meter	0	Litre	709903.2364	67.56659364
SB - Bayview - J - (100% Office & Related)	120	582566.66	kWh	88303.59	Cubic Meter	0	Litre	222898.8535	67.56659311
SB - Bayview - K - (75% Chronic Hospital)	168	4795575.98	kWh	726898.04	Cubic Meter	0	Litre	1834860.178	67.56659277
SB - Bayview - K - (25% Office & Related)	65	1598525.33	kWh	242299.35	Cubic Meter	0	Litre	611620.0659	67.56658975
SB - Bayview - L - (100% Chronic Hospital)	168	5915798.53	kWh	896697.78	Cubic Meter	0	Litre	2263474.325	67.56659161
SB - Bayview - M - (73% Acute Hospital)	168	12232972.39	kWh	1854234.75	Cubic Meter	0	Litre	4680520.951	67.5665919
SB - Bayview - M - (21% Hospital Research)	168	3519074.25	kWh	533409.99	Cubic Meter	0	Litre	1346451.22	67.56659507
SB - Bayview - M - (6% Office & Related)	65	1005449.79	kWh	152402.86	Cubic Meter	0	Litre	384700.3598	67.56659425
SB - Bayview - R - (100% Hospital Research)	168	277954.91	kWh	42131.51	Cubic Meter	0	Litre	106349.7599	67.56658749
SB - Bayview - S - (100% Hospital Research)	168	4020913.24	kWh	609477.14	Cubic Meter	0	Litre	1538462.444	67.56659151
SB - Bayview - T - (90% Acute Hospital)	168	4662779.13	kWh	706769.12	Cubic Meter	0	Litre	1784050.089	67.56659001
SB - Bayview - T - (10% Office & Related)	65	518086.57	kWh	78529.9	Cubic Meter	0	Litre	198227.7834	67.56657383
SB - Bayview - U - (26% Acute Hospital)	168	796863.45	kWh	120786.01	Cubic Meter	0	Litre	304892.0575	67.56658758
SB - Bayview - U - (45% Office & Related)	120	1379186.74	kWh	209052.71	Cubic Meter	0	Litre	527697.7925	67.56659691
SB - Bayview - BU - (100% Chronic Hospital)	168	346466.21	kWh	52516.24	Cubic Meter	0	Litre	132563.2361	67.56659376
SB - SJR - AGN - (33 % Acute Hospital)	84	130046.74	kWh	24195.52	Cubic Meter	0	Litre	58234.3923	41.05704437
SB - SJR - AGN - (67% Office & Related)	65	264034.3	kWh	49124.24	Cubic Meter	0	Litre	118233.4687	41.05703518
SB - SJR - AGS - (100% Chronic Hospital)	168	986807.96	kWh	183598.08	Cubic Meter	0	Litre	441888.5237	41.05703834
SB - SJR - BW - (100% Office & Related)	65	197130.78	kWh	36676.67	Cubic Meter	0	Litre	88274.34268	41.05703696
SB - SJR - SW - (15% Acute Hospital)	65	118780.05	kWh	22099.32	Cubic Meter	0	Litre	53189.20708	41.05702002
SB - SJR - SW - (85% Office & Related)	65	673086.97	kWh	125229.51	Cubic Meter	0	Litre	301405.5654	41.05704098
SB - SJR - HE - (100% Acute Hospital)	84	746235.79	kWh	138839.02	Cubic Meter	0	Litre	334161.2851	41.05703659
SB - Holland - O - (72% Acute Hospital)	168	3734079.8	kWh	360610.56	Cubic Meter	0	Litre	1040401.085	70.89781994
SB - Holland - O - (28% Office & Related)	65	1452142.16	kWh	140237.44	Cubic Meter	0	Litre	404600.4235	70.89781842