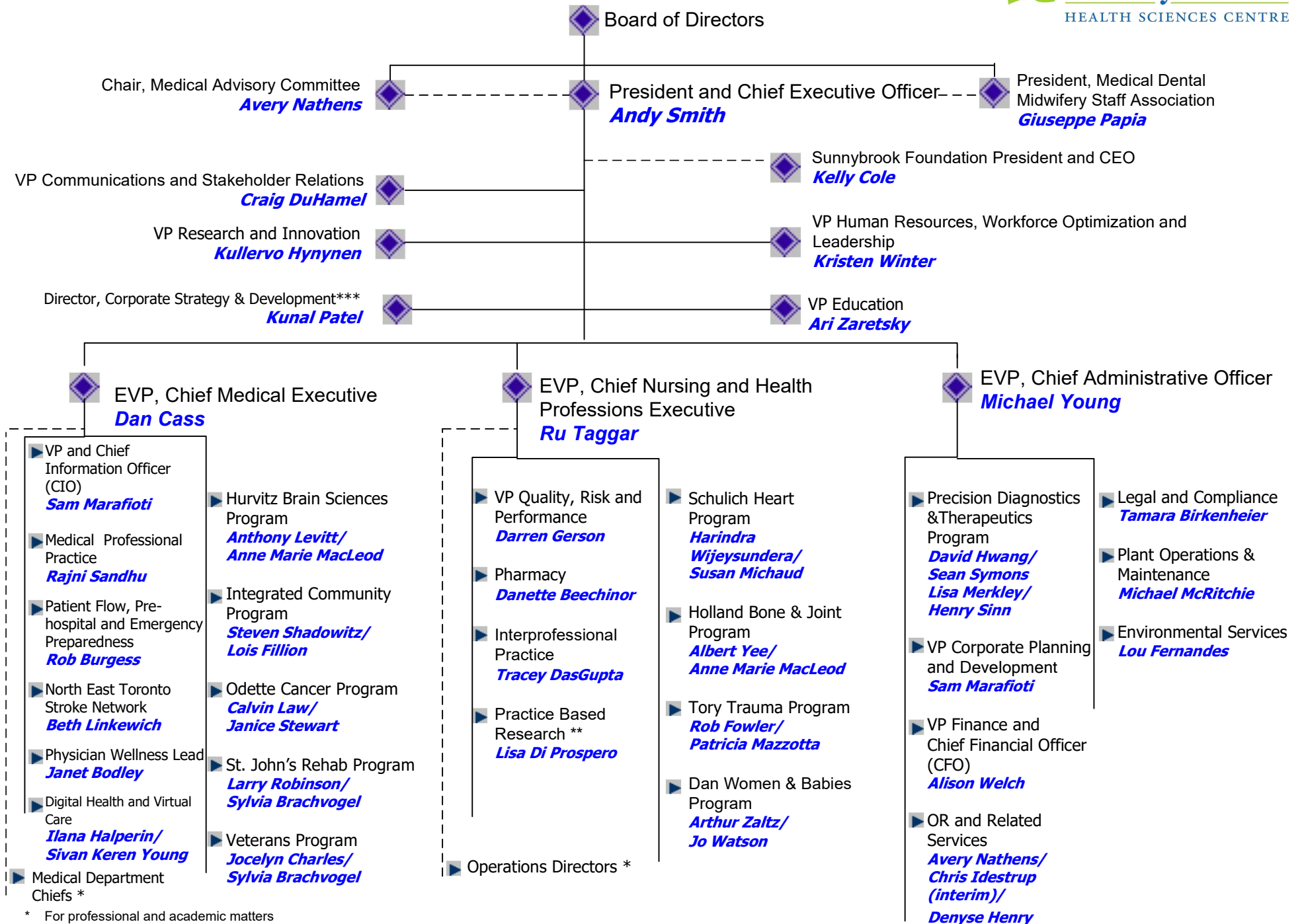


# Organization Structure

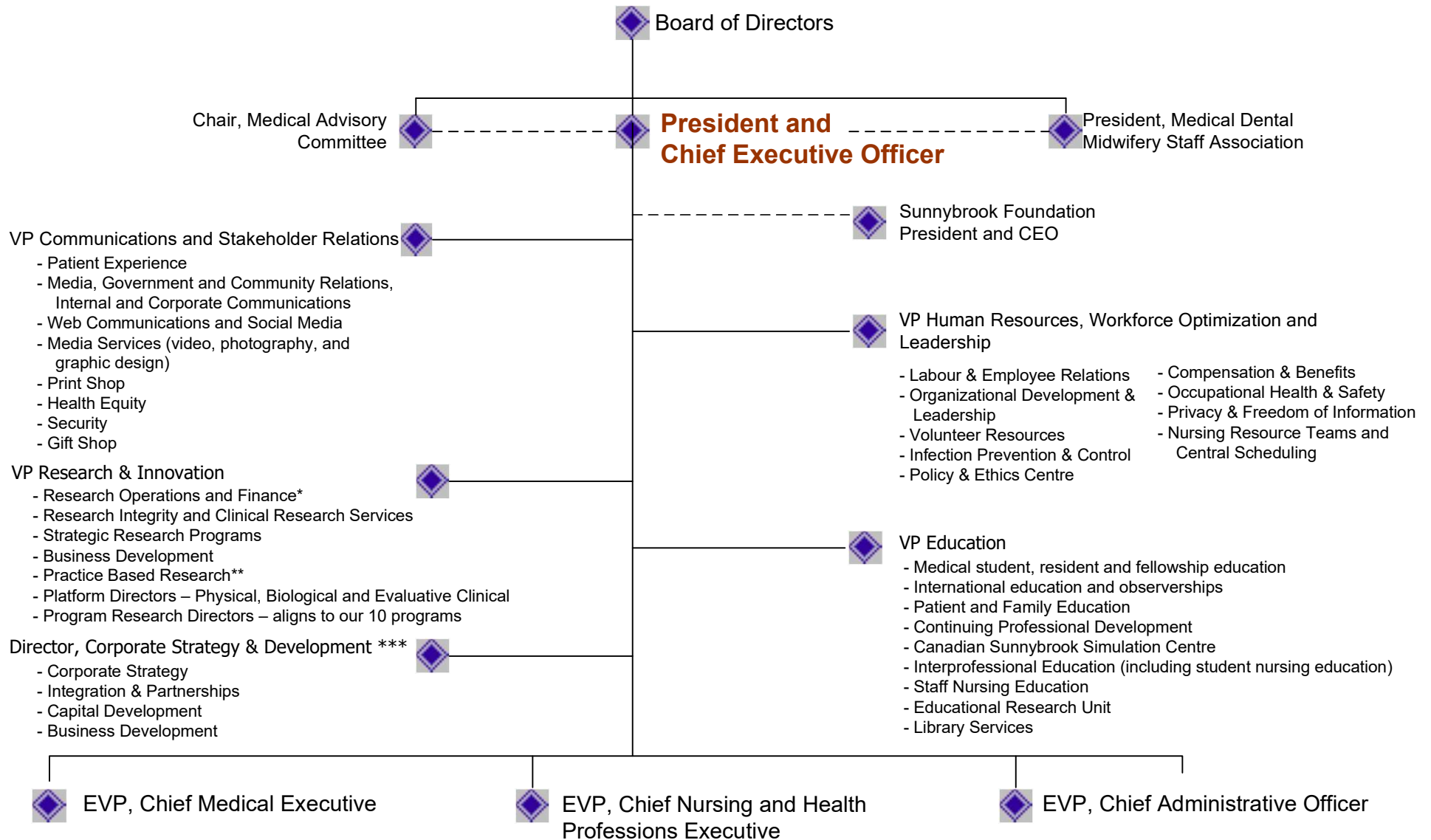


\* For professional and academic matters

\*\* Dual reporting to VP Research

\*\*\* Dual reporting to VP Corporate Planning and Development

# Organization Structure

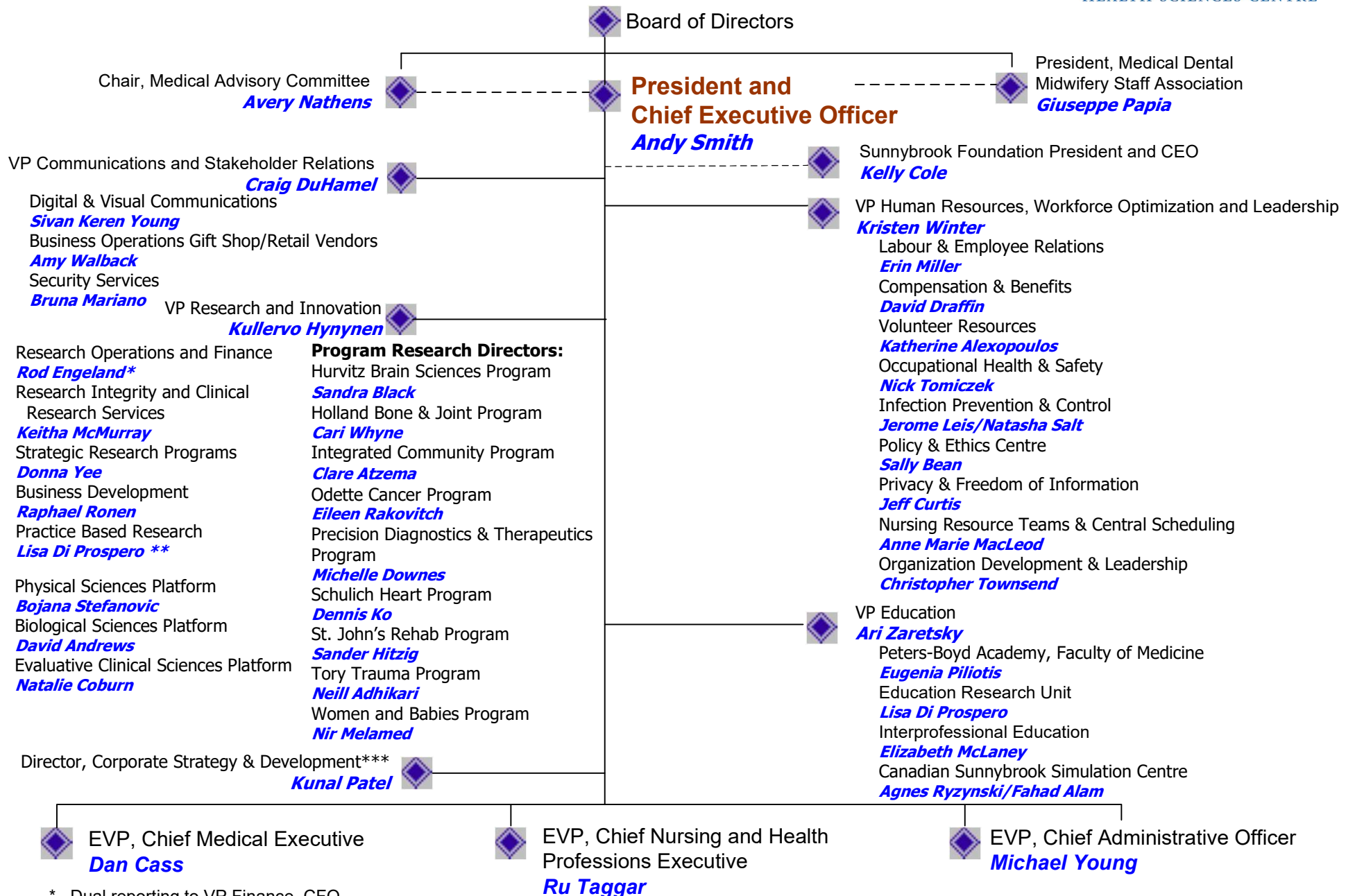


\* Dual reporting to VP Finance, CFO

\*\* Dual reporting to EVP, Chief Nursing and Health Professions Executive

\*\*\* Dual reporting to VP Corporate Planning and Development

# Organization Structure

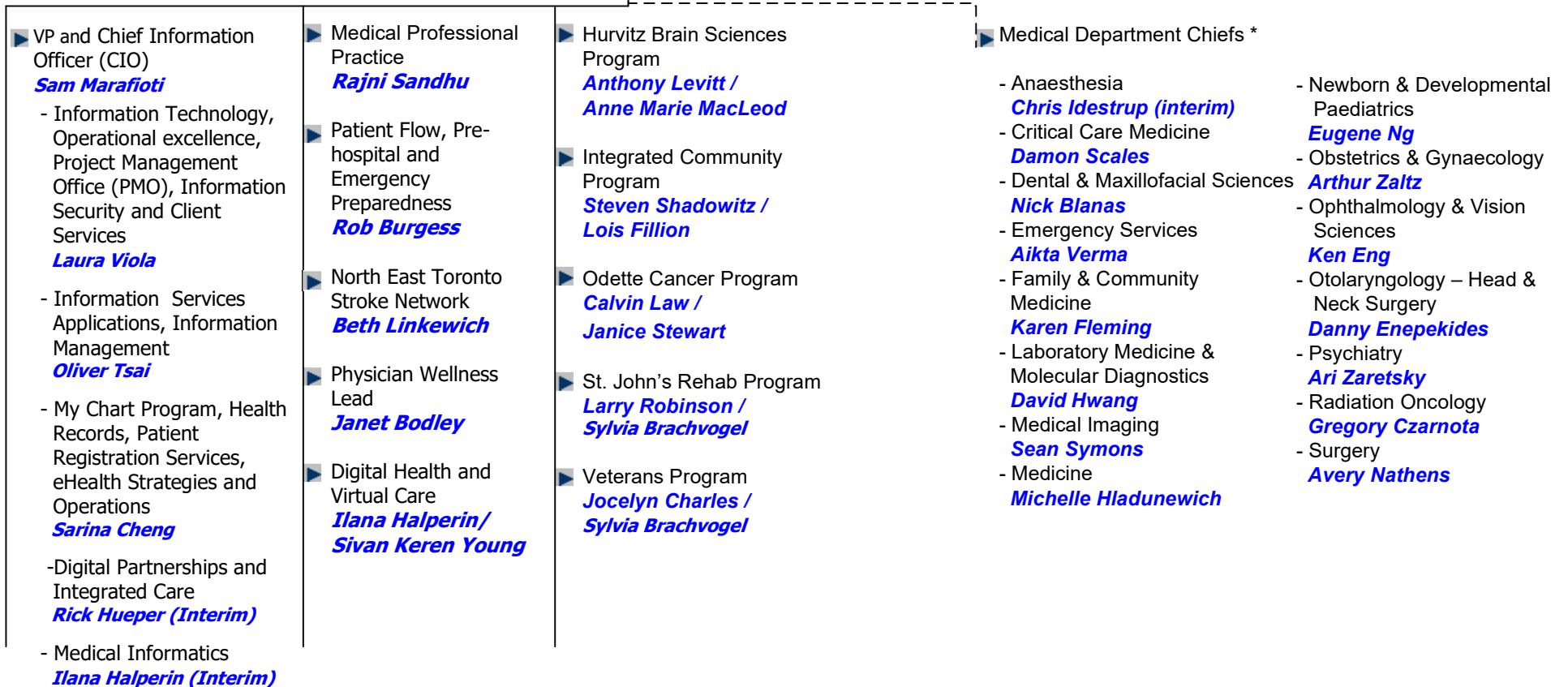


\* Dual reporting to VP Finance, CFO

\*\* Dual reporting to EVP, Chief Nursing and Health Professions Executive

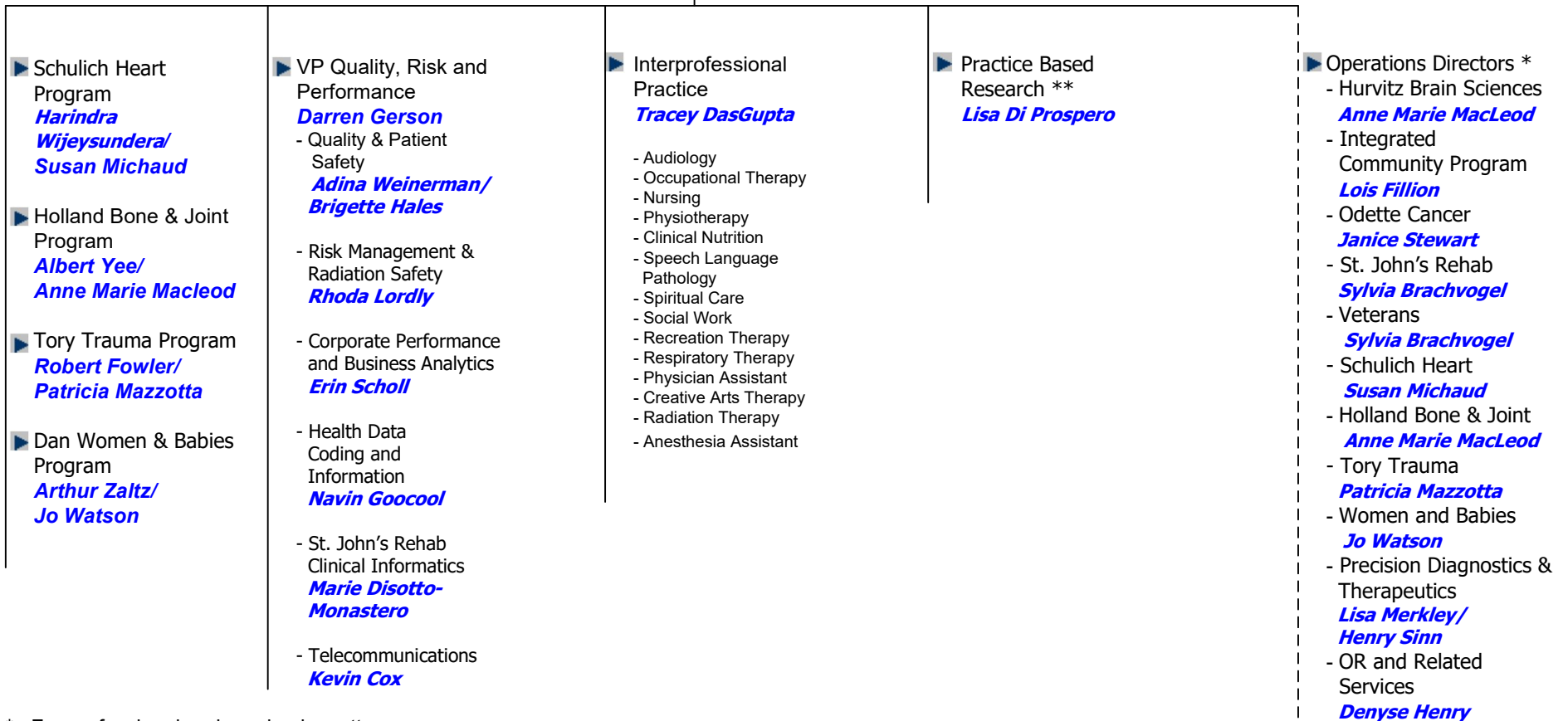
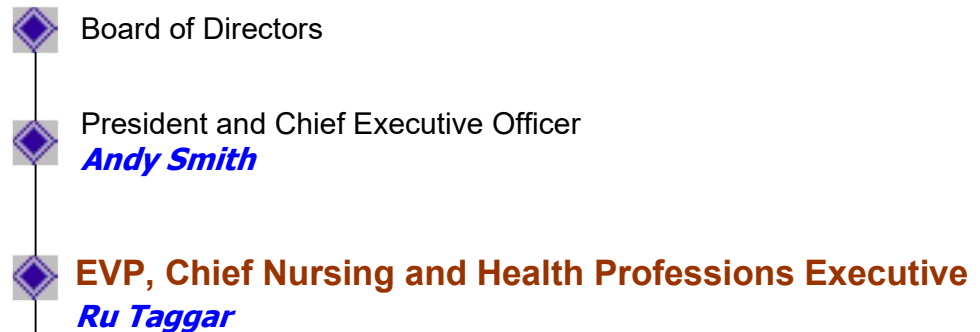
\*\*\* Dual reporting to VP Corporate Planning and Development

# Organization Structure



\* For professional and academic matters

# Organization Structure



\* For professional and academic matters

\*\* Dual reporting to VP Research

**November 2021**

# Organization Structure



<p>► Precision Diagnostics &amp; Therapeutics Program <i>David Hwang/ Sean Symons Lisa Merkley/ Henry Sinn</i></p> <ul style="list-style-type: none"> <li>- Anatomic Pathology</li> <li>- Clinical Chemistry</li> <li>- HeamPath</li> <li>- Microbiology</li> <li>- Transfusion Medicine</li> <li>- Molecular Diagnostics</li> <li>- MRI</li> <li>- CT</li> <li>- X-Ray</li> <li>- Nuclear Medicine</li> <li>- Angiography and Interventional Radiology</li> </ul>	<p>► VP Corporate Planning Development <i>Sam Marafioti</i></p> <ul style="list-style-type: none"> <li>- Capital /Renovation Construction Projects <i>Kunal Patel***</i></li> </ul>	<p>► VP Finance and Chief Financial Officer (CFO) <i>Alison Welch</i></p> <ul style="list-style-type: none"> <li>- Financial Services <i>Stephanie Harris</i> <ul style="list-style-type: none"> <li>- Financial Reporting and Audit</li> <li>- Corporate Billing Accounts Receivable and Revenue Management</li> <li>- Payroll</li> <li>- Finance Business Systems</li> </ul> </li> <li>- Financial Planning <i>Justin Lau</i> <ul style="list-style-type: none"> <li>- Financial Planning &amp; Analysis</li> <li>- MOH Reporting &amp; Case Costing</li> <li>- Funding</li> </ul> </li> <li>- Capital &amp; Treasury <i>Jonathan Tsang</i> <ul style="list-style-type: none"> <li>- Accounts Payable</li> <li>- Capital Finance &amp; Treasury</li> <li>- Capital Equipment Planning</li> <li>- Biomedical Engineering</li> </ul> </li> <li>- Food Services <i>Ann Robertson</i></li> <li>- Procurement, In-house Logistics, and Construction Sourcing <i>Jasmine Randhawa (Plexxus) Henry Cheng (Plexxus) Elli Fusco (Sunnybrook)</i></li> </ul>	<p>► OR and Related Services <i>Avery Nathens/ Chris Idestrup (interim)/ Denyse Henry</i></p> <ul style="list-style-type: none"> <li>- Operating Rooms</li> <li>- Pre-surgical (PAC, Regional Blocks)</li> <li>- Post-surgical (PACU, HiSSU, SSSU, SDS)</li> <li>- Ambulatory Procedures(Endo,Cysto,Colpo)</li> <li>- Reprocessing (MDRC)</li> <li>- Related Services (IV Team, Acute Pain Service, TE Clinic)</li> </ul> <p>► Legal and Compliance <i>Tamara Birkenheier</i></p>	<p>► Plant Operations &amp; Maintenance <i>Michael McRitchie</i></p> <ul style="list-style-type: none"> <li>- Plant Operations</li> <li>- Facility Maintenance</li> <li>- Energy Management &amp; Sustainability</li> </ul> <p>► Environmental Services <i>Lou Fernandes</i></p> <ul style="list-style-type: none"> <li>- Environmental Services</li> <li>- Laundry and Linen Services</li> <li>- Patient Transport</li> <li>- Mail Services</li> <li>- Parking Services</li> </ul>
--	---	--	---	---

\*\*\* Dual reporting to CEO