

# **A Guide to Toronto Funeral Homes**

Compiled by:

**Kathy Edmison, DMin  
Nancy Paris, MSW, RSW**

March 2008



To those who will use this guide:

We understand that you may be using this guide at a time when you are experiencing grief. It is a difficult time to be making important decisions and it is our hope that this guide will support you in the process of choosing a funeral home.

The first section of the guide has an alphabetical listing of all Toronto-area funeral homes, including basic contact information.

Following this, you will find more detailed listings provided by funeral homes that responded to our questionnaire. In 2007 we sent a survey to all Toronto area funeral homes asking for general information that we felt families would want to know. The replies of those who responded have been compiled in this directory.

The directory contains detailed maps of the locations of funeral homes to guide choices based on geographical area.

The final section contains other relevant resources.

We designed this guide with families in mind and hope it will help you in your decision-making.

If you have any feedback about this guide, please feel free to contact us.

In this time of grief, may you find comfort and peace.

Kathy Edmison  
Spiritual Care Provider  
(416) 480 6100 ext. 3607

Nancy Paris  
Social Worker  
(416) 480 6100 ext. 2979

## *Index to this Guide*

Section	Pages
Introduction	2
Index to the Guide	3
List of Toronto Funeral Homes	4-11
Detailed Information from Funeral Homes responding to our Questionnaire	12-49
Maps 1 to 5	50-54
Other Resources	55

## Toronto-area Funeral Homes

	<b>Located on Map</b>	<b>Detailed Page</b>
<b>A Basic Service</b> 2966A Eglinton Avenue East, Toronto M1J 2E7 Phone: (416) 226-2480 Fax: (416) 289-2240 Email: <a href="mailto:rsbmiller@on.aibn.com">rsbmiller@on.aibn.com</a> Web: <a href="http://www.abasicfuneral.com">http://www.abasicfuneral.com</a>	Map 1	
<b>A. Roy Miller Funeral Chapel</b> 1695 St. Clair Avenue West, Toronto M6N 1J2 Phone: (416) 656-3585 Fax: (416) 656-1712	Map 3	
<b>Acsettone Funeral Home</b> 384 Finley Avenue, Ajax L1S 2E3 Phone: 905-428-9090 Fax: 905-428-0348 Email: <a href="mailto:acsettone@gmail.com">acsettone@gmail.com</a> Web: <a href="http://www.ajaxfuneralhome.ca/">http://www.ajaxfuneralhome.ca/</a>	Map 5	12
<b>Affordable Burials and Cremations</b> 733A Mount Pleasant Road, Toronto M4S 2N4 Phone: (416) 487-9697 Fax: (416) 488-2816 Email: <a href="mailto:newbiggingfh@rogers.com">newbiggingfh@rogers.com</a> Web: <a href="http://www.affordableburialsandcremations.ca/">http://www.affordableburialsandcremations.ca/</a>	Map 1 Map 2	
<b>Aftercare Cremation &amp; Burial Service</b> 1097 O'Connor Drive, Toronto M4B 2T5 Phone: 416-440-8878 Fax 416-440-8964 Email: <a href="mailto:dmccann@aftercare.org">dmccann@aftercare.org</a> Web: <a href="http://www.aftercare.org/">http://www.aftercare.org/</a>	Map 1	14
<b>Arthur B. Ridley Funeral Home</b> 3080 Lakeshore Boulevard West, Toronto M8V 1K3 Phone: (416) 259-3705 Fax: (416) 259-8193 Email: <a href="mailto:contactus@ridleyfuneralhome.com">contactus@ridleyfuneralhome.com</a> Web: <a href="http://www.ridleyfuneralhome.com">http://www.ridleyfuneralhome.com</a>	Map 3	
<b>Balmoral Funeral Home</b> 2505 Eglinton Avenue East, Toronto M1K 2R1 Phone: 416-265-2652 Fax: 416-265-2657 Email: <a href="mailto:balmoralfuneral@bellnet.ca">balmoralfuneral@bellnet.ca</a> Web: <a href="http://www.funeral911.com/">http://www.funeral911.com/</a>	Map 1	16
<b>Bates &amp; Dodds Funeral Services</b> 931 Queen Street West, Toronto M6J 1G5 Phone: (416) 703-0681 Fax: (416) 703-0683 Email: <a href="mailto:stanley@batesanddodds.com">stanley@batesanddodds.com</a>	Map 3	

	<b>Located on Map</b>	<b>Detailed Page</b>
<b>Benjamin's Park Memorial Chapel</b> 2401 Steeles Avenue West, Toronto M3J 2P1 Phone: (416) 663-9060 Fax: (416) 663-9417 Email: <a href="mailto:michael@bpmc.on.ca">michael@bpmc.on.ca</a> Web: <a href="http://www.benamins.ca/">http://www.benamins.ca/</a>	Map 2	
<b>Bernardo Funeral Home (Albion)</b> 855 Albion Road, Toronto M9V 1A3 Phone: (416) 747-7231 Fax: (416) 747-7142 Email: <a href="mailto:bernardofuneralhome@bellnet.ca">bernardofuneralhome@bellnet.ca</a> Web: <a href="http://www.bernardofuneralhomes.com">http://www.bernardofuneralhomes.com</a>	Map 2	
<b>Bernardo Funeral Home (Dufferin)</b> 2960 Dufferin Street, Toronto, M6B 3S9 Phone: (416) 789-7661 Fax: (416) 789-9805 Email: <a href="mailto:info@bernardofuneralhomes.com">info@bernardofuneralhomes.com</a> Web: <a href="http://www.bernardofuneralhomes.com">http://www.bernardofuneralhomes.com</a>	Map 2 Map 3	18

<b>Cardinal Funeral Homes (Annette Chapel)</b> 92 Annette Street, Toronto M6P 1N6 Phone: (416) 762-8141 Fax: (416) 762-7016 Email: <a href="mailto:cfh92@rogers.com">cfh92@rogers.com</a> Web: <a href="http://www.cardinalfuneralhomes.com">http://www.cardinalfuneralhomes.com</a>	Map 3	
<b>Cardinal Funeral Homes (Bathurst Chapel)</b> 366 Bathurst Street, Toronto M5T 2S6 Phone: (416) 603-1444 Fax: (416) 603-1963 Email: <a href="mailto:paul@cardinalfuneralhomes.com">paul@cardinalfuneralhomes.com</a> Web: <a href="http://www.cardinalfuneralhomes.com">http://www.cardinalfuneralhomes.com</a>	Map 1 Map 3	
<b>Cardinal Funeral Homes (Earle Elliott Chapel)</b> 715 Dovercourt Road, Toronto M6H 2W7 Phone: (416) 532-3301 Fax: (416) 536-1119 Email: <a href="mailto:crystal@cardinalfuneralhomes.com">crystal@cardinalfuneralhomes.com</a> Web: <a href="http://www.cardinalfuneralhomes.com">http://www.cardinalfuneralhomes.com</a>	Map 3	

<b>Delmoro Funeral Home</b> 61 Beverly Hills Drive, Toronto M3L 1A2 Phone: (416) 249-4499 Fax: (416) 249-6769 Email: <a href="mailto:1904@alderwoods.com">1904@alderwoods.com</a>	Map 2 Map 3	
<b>DeMarco Funeral Home</b> 3725 Keele Street, Toronto M3J 1N4 Phone: (416) 636-7027 Fax: (416) 636-5337 Email: <a href="mailto:demarcofuneralhome@hotmail.com">demarcofuneralhome@hotmail.com</a> Web: <a href="http://www.demarcofuneralhomes.com">http://www.demarcofuneralhomes.com</a>	Map 2	

	<b>Located on Map</b>	<b>Detailed Page</b>
<b>Fratelli Vescio Funeral Homes (St Padre Pio Chapel)</b> 8101 Weston Road, Woodbridge L4L 1A6 Phone: (905) 850-3332 Email: <a href="mailto:nvescio@rogers.com">nvescio@rogers.com</a>	Map 2	

<b>G.H. Hogle Funeral Homes (Mimico)</b> 63 Mimico Avenue, Toronto M8V 1R2 Phone: (416) 251-7531 Fax: (416) 251-5236 Email: <a href="mailto:info@hoglefuneralhomes.com">info@hoglefuneralhomes.com</a> Web: <a href="http://www.hoglefuneralhomes.com">http://www.hoglefuneralhomes.com</a>	Map 3	
<b>G.H. Hogle Funeral Homes (Wignall Chapel)</b> 62 Long Branch Avenue, Toronto M8W 3J4 Phone: (416) 255-3816 Fax: (416) 251-5236 Email: <a href="mailto:erinhogle@hoglefuneralhomes.com">erinhogle@hoglefuneralhomes.com</a> Web: <a href="http://www.hoglefuneralhomes.com">http://www.hoglefuneralhomes.com</a>	Map 3	
<b>Giffen-Mack Funeral Home &amp; Cremation Centre (Danforth)</b> 2570 Danforth Avenue, Toronto M4C 1L3 Phone: (416) 698-3121 Fax: (416) 698-6159 Email: <a href="mailto:loc3778@sci-us.com">loc3778@sci-us.com</a> Web: <a href="http://www.giffenmackdanforth.com">http://www.giffenmackdanforth.com</a>	Map 1	
<b>Giffen-Mack Funeral Home &amp; Cremation Centre (Lawrence)</b> 4115 Lawrence Avenue East, Toronto M1E 2S2 Phone: (416) 281-6800 Fax: (416) 281-5822 Email: <a href="mailto:1041@alderwoods.com">1041@alderwoods.com</a> Web: <a href="http://www.giffenmackscarborough.com">http://www.giffenmackscarborough.com</a>	Map 5	

<b>Hebrew Basic Burial</b> 3429 Bathurst Street, Toronto M6A 2C3 Phone: (416) 780-0596 Fax: (416) 780-0638 Email: <a href="mailto:larry@bpmc.on.ca">larry@bpmc.on.ca</a>	Map 2	
<b>Heritage Funeral Centre</b> 50 Overlea Boulevard, Toronto M4H 1B6 Phone: (416) 423-1000 Fax: (416) 424-2074 Email: <a href="mailto:Heritage@bellnet.ca">Heritage@bellnet.ca</a> Web: <a href="http://www.heritagefuneralcentre.ca">http://www.heritagefuneralcentre.ca</a>	Map 1	20

	<b>Located on Map</b>	<b>Detailed Page</b>
<b>Highland Funeral Home and Cremation Centre</b> 3280 Sheppard Avenue East, Toronto M1T 3K3 Phone: (416) 773-0933 Fax: (416) 773-0071 Email: <a href="mailto:highlandfh@arbormemorial.com">highlandfh@arbormemorial.com</a> Web: <a href="http://www.highland-funeral.ca">http://www.highland-funeral.ca</a>	Map 4	
<b>Humphrey Funeral Home (A.W. Miles Chapel)</b> 1403 Bayview Avenue, Toronto M4G 3A8 Phone: (416) 487-4523 Fax: (416) 487-4395 Email: <a href="mailto:bth@humphreymiles.com">bth@humphreymiles.com</a> Web: <a href="http://www.humphreymiles.com">http://www.humphreymiles.com</a>	Map 1	22

<b>Jerrett Funeral Homes (Kennedy)</b> 660 Kennedy Road, Toronto M1K 2B5 Phone: (416) 266-4404 Fax: (416) 266-8475 Email: <a href="mailto:jerrettscarb@rogers.com">jerrettscarb@rogers.com</a> Web: <a href="http://www.dignitymemorial.com">http://www.dignitymemorial.com</a>	Map 1	
<b>Jerrett Funeral Homes (St. Clair)</b> 1141 St. Clair Avenue West, Toronto M6E 1B1 Phone: (416) 654-7744 Fax: (416) 654-0347 Email: <a href="mailto:kevin.daudlin@sci-us.com">kevin.daudlin@sci-us.com</a> Web: <a href="http://www.dignitymemorial.com">http://www.dignitymemorial.com</a>	Map 2 Map 3	
<b>Jerrett Funeral Homes (Yonge)</b> 6191 Yonge Street, Toronto M2M 4K4 Phone: (416) 223-6050 Fax: (416) 223-5921 Email: <a href="mailto:robert.villeneuve@sci-us.com">robert.villeneuve@sci-us.com</a> Web: <a href="http://www.dignitymemorial.com">http://www.dignitymemorial.com</a>	Map 2 Map 4	
<b>Jerrett Funeral Home (Hong Kong Chapel)</b> 8088 Yonge Street, Thornhill L4J 1W3 Phone: (905) 889-1734 Fax: (905) 889-4390 Email: <a href="mailto:jerrettvaughanchapel@rogers.com">jerrettvaughanchapel@rogers.com</a>	Map 4	

<b>Lynett Funeral Home</b> 3299 Dundas Street West, Toronto Phone: (416) 767-1176 Fax: (416) 760-0973 Email: <a href="mailto:lynettfh@arbormemorial.com">lynettfh@arbormemorial.com</a> Web: <a href="http://www.lynettfuneralhome.ca">http://www.lynettfuneralhome.ca</a>	Map 2 Map 3	24
--	----------------	----

	<b>Located on Map</b>	<b>Detailed Page</b>
<b>Marshall Funeral Home</b> 10366 Yonge Street, Richmond Hill L4C 3B8 Phone: (905) 884-1062 Fax: (905) 884-0416 Email: <a href="mailto:info@marshallfuneralhome.com">info@marshallfuneralhome.com</a> Web: <a href="http://www.marshallfuneralhome.com">http://www.marshallfuneralhome.com</a>	Map 4	
<b>McDougall &amp; Brown Funeral Home (Kingston Road Chapel)</b> 2900 Kingston Road, Toronto M1M 1N5 Phone: (416) 267-4656 Fax: (416) 267-5640 Email: <a href="mailto:Fh7170@arbormemorial.com">Fh7170@arbormemorial.com</a> Web: <a href="http://www.resthavenmemorial.com/location.aspx?siteid=1047">http://www.resthavenmemorial.com/location.aspx?siteid=1047</a>	Map 1	
<b>McDougall &amp; Brown Funeral Home (Eglinton Chapel)</b> 1812 Eglinton Avenue West, Toronto M6E 2H6 Phone: (416) 782-1197 Fax: (416) 782-7139 Email: <a href="mailto:mbeglington@arbormemorial.com">mbeglington@arbormemorial.com</a> Web: <a href="http://www.mcdbrown-eglinton.ca">http://www.mcdbrown-eglinton.ca</a>	Map 2 Map 3	
<b>Moddcham Funeral Home</b> 4242B Kingston Road, Toronto M1E 2M7 Phone: (416) 282-6777	Map 5	26
<b>Morley Bedford Funeral Services</b> 159 Eglinton Avenue West, Toronto M4R 1A8 Phone: (416) 489-8733 Fax: (416) 489-1810 Email: <a href="mailto:alcrawford@morleybedford.ca">alcrawford@morleybedford.ca</a> Web: <a href="http://www.morleybedford.ca">http://www.morleybedford.ca</a>	Map 2 Map 3	28
<b>Murray E. Newbigging Funeral Home</b> 733 Mt. Pleasant Road, Toronto, ON M4S 2N4 Phone: (416) 489-8811 Fax: (416) 488-2816 Email: <a href="mailto:menfh@rogers.com">menfh@rogers.com</a> Web: <a href="http://www.newbiggingfuneralhome.com/">http://www.newbiggingfuneralhome.com/</a>	Map 1	30

<b>Newediuk Funeral Home</b> 2104 Kipling Avenue, Toronto M9W 4K5 Phone: (416)745-7555 Fax: (416)743-3383	Map 2 Map 3	
---	----------------	--

<b>O'Connor Bros. Funeral Home</b> 1871 Danforth Avenue, Toronto M4C 1J3 Phone: (416) 698-9404 Fax: (416) 698-6578	Map 1	
--	-------	--



	<b>Located on Map</b>	<b>Detailed Page</b>
<b>Ogden Funeral Homes</b> 4164 Sheppard Avenue East, Toronto M1S 1T3 Phone: (416) 293-5211 Fax: (416) 298-4064 Email: <a href="mailto:david@ogdenfh.com">david@ogdenfh.com</a> Web: <a href="http://www.ogdenfuneralhome.com">http://www.ogdenfuneralhome.com</a>	Map 4	32

<b>Paul O'Connor Funeral Home</b> 1939 Lawrence Ave. East, Toronto M1R 2Y8 Phone: (416) 751-7890 Fax: (416) 751-1390 Email: <a href="mailto:Pauloconnorfuneralhome@rogers.com">Pauloconnorfuneralhome@rogers.com</a> Web: <a href="http://www.pauloconnor.yr.ca/en_CA">http://www.pauloconnor.yr.ca/en_CA</a>	Map 1	34
---	-------	----

<b>Rosar-Morrison Funeral Home &amp; Chapel</b> 467 Sherbourne Street, Toronto M4X 1K5 Phone: (416) 924-1408 Fax: (416) 323-3571 Email: <a href="mailto:alex.munroe@sci-us.com">alex.munroe@sci-us.com</a> Web: <a href="http://www.dignitymemorial.com/3155/">www.dignitymemorial.com/3155/</a>	Map 1	
--	-------	--

<b>R. S. Kane Funeral Home</b> 6150 Yonge Street, Toronto M2M 3W9 Phone: (416) 221-1159 Fax: (416) 221-1586 Email: <a href="mailto:info@rskane.ca">info@rskane.ca</a> Web: <a href="http://www.rskane.ca">http://www.rskane.ca</a>	Map 2 Map 4	36
--	----------------	----

<b>Ryan &amp; Odette</b> 1498 Dundas Street West, Toronto M6K 1T5 Phone: (416) 532-5965 Fax: (416) 532-3994	Map 3	
---	-------	--

<b>Scarborough Funeral Centre</b> 2966 Eglinton Ave. East, Toronto M1J 2E7 Phone: (416) 289-2558 Fax: (416) 289-2240 Email: <a href="mailto:funeralcentres@on.aibn.com">funeralcentres@on.aibn.com</a> Web: <a href="http://www.scarboroughfuneralcentre.com/home.html">http://www.scarboroughfuneralcentre.com/home.html</a>	Map 5	38
---	-------	----

<b>Scott Funeral Home</b> 1273 Weston Road, Toronto M6M 4R2 Phone: (416) 243-0202 Fax: (416) 245-9934 Email: <a href="mailto:scottwestonfh@arbormemorial.com">scottwestonfh@arbormemorial.com</a>	Map 2 Map 3	
--	----------------	--

<b>Sherrin Funeral Home &amp; Cremation Centre</b> 873 Kingston Road, Toronto M4E 1S4 Phone: (416) 698-2861 Fax: (416) 698-3742 Email: <a href="mailto:sherrinh@arbormemorial.com">sherrinh@arbormemorial.com</a> Web: <a href="http://www.resthavenmemorial.com/location.aspx?siteid=1053">http://www.resthavenmemorial.com/location.aspx?siteid=1053</a>	Map 1	
--	-------	--

	<b>Located on Map</b>	<b>Detailed Page</b>
<b>The Simple Alternative Funeral Centre (Pickering )</b> 1057 Brock Road, Pickering L1W 3T7 Phone: (905) 686-5589 Fax: (905) 686-3677 Email: <a href="mailto:info@thesimplealternative.ca">info@thesimplealternative.ca</a> Web: <a href="http://www.thesimplealternative.ca/">http://www.thesimplealternative.ca/</a>	Map 5	40
<b>The Simple Alternative Funeral Centre (Toronto )</b> 275 Lesmill Road, North York M3B 2V1 Phone: (416) 441-1580 Fax: (416) 441-1030 Email: <a href="mailto:info@thesimplealternative.ca">info@thesimplealternative.ca</a> Web: <a href="http://www.thesimplealternative.ca/">http://www.thesimplealternative.ca/</a>	Map 4	42
<b>Steeles Memorial Chapel</b> 350 Steeles Avenue West, Thornhill L4J 1A1 Phone: (905) 881-6003 Fax: (905) 881-8539 Email: <a href="mailto:info@steeles.org">info@steeles.org</a> Web: <a href="http://www.steelesmemorialchapel.com">http://www.steelesmemorialchapel.com</a>	Map 2 Map 4	

<b>Trull Funeral Home &amp; Cremation Centre (Danforth)</b> 1111 Danforth Avenue, Toronto M4J 1M5 Phone: (416) 465-4661 Fax: (416) 465-6028 Email: <a href="mailto:Anne.Kilpatrick@sci-us.com">Anne.Kilpatrick@sci-us.com</a> Web: <a href="http://www.dignitymemorial.com/3779/">http://www.dignitymemorial.com/3779/</a>	Map 1	
<b>Trull Funeral Home &amp; Cremation Centre (Yonge)</b> 2704 Yonge Street, Toronto M4N 2H7 Phone: (416) 488-1101 Fax: (416) 488-9531 Email: <a href="mailto:Anne.Kilpatrick@sci-us.com">Anne.Kilpatrick@sci-us.com</a> Web: <a href="http://www.dignitymemorial.com/3780/">http://www.dignitymemorial.com/3780/</a>	Map 1 Map 2 Map 3	
<b>Turner &amp; Porter Funeral Directors (Butler Chapel)</b> 4933 Dundas Street West, Toronto M9A 1B6 Phone: (416) 231-2283 Fax: (416) 231-1661 Email: <a href="mailto:butlerchapel@turnerporter.ca">butlerchapel@turnerporter.ca</a> Web: <a href="http://www.turnerporter.ca/welcome.html">http://www.turnerporter.ca/welcome.html</a>	Map 3	
<b>Turner &amp; Porter Funeral Directors (Roncesvalles Chapel)</b> 436 Roncesvalles Avenue, Toronto M6R 2N2 Phone: (416) 533-7954 Fax: (416) 533-7957 Email: <a href="mailto:roncesvalles@turnerporter.ca">roncesvalles@turnerporter.ca</a> Web: <a href="http://www.turnerporter.ca/welcome.html">http://www.turnerporter.ca/welcome.html</a>	Map 3	44

	<b>Located on Map</b>	<b>Detailed Page</b>
<b>Turner &amp; Porter Funeral Directors Yorke Chapel</b> 2357 Bloor Street West, Toronto M6S 1P4 Phone: (416) 767-3153 Fax: (416) 767-5986 Email: <a href="mailto:yorkechapel@turnerporter.ca">yorkechapel@turnerporter.ca</a> Web: <a href="http://www.turnerporter.ca/welcome.html">http://www.turnerporter.ca/welcome.html</a>	Map 3	46
<b>Ward Funeral Home (Weston Chapel)</b> 2035 Weston Road, Toronto M9N 1X7 Phone: (416) 241-4618 Fax: (416) 241-0415 Email: <a href="mailto:Weston@wardfh.com">Weston@wardfh.com</a> Web: <a href="http://www.wardfuneralhome.com">http://www.wardfuneralhome.com</a>	Map 2 Map 3	48
<b>Ward-Damiani Funeral Home</b> 4671 Highway 7, Woodbridge L4L 1S6 Phone 905-851-9100 Toll-free 1-888-836-6757 Fax: 905-851-8910 Email: <a href="mailto:joannej@wardfh.com">joannej@wardfh.com</a> Web: <a href="http://www.wardfuneralhome.com">http://www.wardfuneralhome.com</a>	Map 2	
<b>Washington &amp; Johnston Funeral Home</b> 717 Queen Street East, Toronto M4M 1H1 Phone:(416) 465-3577 Fax: (416) 465-1301 Email: <a href="mailto:washingtonjohnston@arbormemorial.com">washingtonjohnston@arbormemorial.com</a> Web: <a href="http://www.resthavenmemorial.com/location.aspx?siteid=1030">http://www.resthavenmemorial.com/location.aspx?siteid=1030</a>	Map 1	
<b>Wing On Chapel World Funeral Home</b> 665 Spadina Avenue, Toronto M5S 2H9 Phone: (416) 979-2401 Fax: (416) 979-0918 Web: <a href="http://www.dignitymemorial.com/3142/">http://www.dignitymemorial.com/3142/</a>	Map 1 Map 3	

# Accettone Funeral Home

384 Finley Avenue, Ajax (Bayly Street and Finley Ave)

Phone: 905-428-9090

Fax: 905-428-0348

Email: [accettone@gmail.com](mailto:accettone@gmail.com)

Web: <http://www.ajaxfuneralhome.ca/>

## General Information

Brief Description	We are a family owned and operated funeral home that serves all denominations, providing traditional and non-traditional cremation and burial services.
Nearest subway or TTC	N/A.
Reception facilities	80 people.
Catering and food	Provides catering and food can be brought on premises.
Visitation facilities	Up to 200.
Chapel or Area designated for funeral services	Up to 120, additional adjoining overflow area can accommodate 40 to 60 people.
Parking facilities	Off street designated parking for 100 vehicles and undesignated parking for additional 100.
Accessibility	Wheelchair accessibility and designated parking.
Facilities for children	None listed.
Accommodations nearby and any preferential rates	Comfort Inn (Hwy #2 Pickering, preferential rate). Super 8 (Westney and Bayly).
Languages	English, Italian.
Religious/Cultural	Multi-faith.

## Funeral or Celebration of Life

Availability of clergy person or officiant for funeral service	A list is available for each religion.
Cremation and/or burial	Both are available.
Service to send a body abroad	Yes.
Will your funeral planners visit the home or hospital to make arrangements?	Yes.
Counseling and bereavement supports	None listed.

## Making Arrangements

Estimated cost for basic arrangements, i.e., all transportation of the body as required, cremation, a container, no service or visitation, and any cost of associated dispersements, documentation, and taxes.	2007 Quote: \$1,918.90 (all inclusive).
First steps required to transfer the body from the hospital to the funeral home	Full arrangements with next of kin or executor.

# Aftercare Cremation & Burial Service

1097 O'Connor Drive, Toronto M4B 2T5

Phone: 416-440-8878

Fax 416-440-8964

Email: [dmccann@aftercare.org](mailto:dmccann@aftercare.org)

Web: <http://www.aftercare.org/>

## General Information

Brief Description	Aftercare has been providing lower cost cremation and funeral service options to our client families since 1995.
Nearest subway or TTC	70A Bus from Coxwell Subway <u>or</u> transfer from Eglinton Bus at Victoria Park.
Reception facilities	No.
Catering and food	Yes.
Visitation facilities	Accommodates a large group for visitations as people tend to come and go.
Chapel or Area designated for funeral services	Seating for 60 people, larger facilities are available for rent such as Estates of Sunnybrook, Bob Rumball Centre, Toronto Botanical Gardens.
Parking facilities	Parking for 15 cars, a lot of street parking in area.
Accessibility	Handicapped access and washroom – all ceremonies and facilities on one floor.
Facilities for children	Private areas for changing children, lounge to play in.
Accommodations nearby and any preferential rates	Crowne Plaza (Eglinton & DVP).
Languages	English.
Religious/Cultural	Islamic (we have a Muslim staff member) and Hindu.

## Funeral or Celebration of Life

Availability of clergyperson or officiant for funeral service	A list is available for each religion.
Cremation and/or burial	Both are available.
Service to send a body abroad	Yes – We specialize in this.
Will your funeral planners visit the home or hospital to make arrangements?	Yes.
Counseling and bereavement supports	One session with bereavement counselor, and clients are referred to a list of bereavement resources.

## Making Arrangements

Estimated cost for basic arrangements, i.e., all transportation of the body as required, cremation, a container, no service or visitation, and any cost of associated dispersements, documentation, and taxes.	2007 Quote: \$ 1,397.00 All inclusive (Services, Recycled Cardboard Container, Cremation, Death Registration Fee, Coroner, GST). Includes everything except an urn, notice in newspaper and disposition of cremated remains.
First steps required to transfer the body from the hospital to the funeral home	A call from a representative of the family, a signature from the attending physician, and a release from the hospital.

# Balmoral Funeral Home

2505 Eglinton Ave. E. Toronto M1K 2R1

Phone: 416-265-2652

Fax: 416-265-2657

Email: [balmoralfuneral@bellnet.ca](mailto:balmoralfuneral@bellnet.ca)

Web: <http://www.funeral911.com>

## General Information

Brief Description	Simple Direct Cremation, Burial and Repatriation Service (Reasonable Price).
Nearest subway or TTC	Kennedy Subway and Take eastbound Bus and get off at 2 <sup>nd</sup> Bus Stop.
Reception facilities	20.
Catering and food	Provides catering, and food can be brought on premises.
Visitation facilities	100.
Chapel or Area designated for funeral services	200.
Parking facilities	20 – 30 Cars.
Accessibility	None listed.
Facilities for children	None listed.
Accommodations nearby and any preferential rates	None listed.
Languages	Chinese, Tamil, Korean and English.
Religious/Cultural	Buddhism (Chinese, Vietnamese, Korean). Hindu (Indian, Tamil, West Indies). Christian (Christian, Orthodox).

## Funeral or Celebration of Life

Availability of clergyperson or officiant for funeral service	An officiant is available.
Cremation and/or burial	Both are available.
Service to send a body abroad	Yes.
Will your funeral planners visit the home or hospital to make arrangements?	Yes.
Counseling and bereavement supports	Clients are referred to a sponsored program.



## Making Arrangements

Estimated cost for basic arrangements, i.e., all transportation of the body as required, cremation, a container, no service or visitation, and any cost of associated dispersements, documentation, and taxes.	2007 Quote: Cremation \$1,195 including Tax. Burial \$2,700 including Tax.
First steps required to transfer the body from the hospital to the funeral home	A call from a representative of the family, a signature from the attending physician, and a release from the hospital.

# Bernardo Funeral Home Ltd.

2960 Dufferin Street, Toronto, M6B 3S9

Phone: 416-789-7661

Fax: 416-789-9805

Email: [info@bernardofuneralhomes.com](mailto:info@bernardofuneralhomes.com)

Web: <http://www.bernardofuneralhomes.com>

## General Information

Brief Description	We are a family operated establishment for the last 40 years, providing both traditional and modern type funerals. We tailor the arrangement process based on the family's wish.
Nearest subway or TTC	Lawrence or Glencairn Ave Spadina line at Marlee Ave.
Reception facilities	Yes, large.
Catering and food	Provides catering, and food can be brought on premises.
Visitation facilities	Four large and two small rooms. Perhaps the largest facilities in the city.
Chapel or Area designated for funeral services	Yes, many.
Parking facilities	Large and on the funeral home property.
Accessibility	Entrance, washrooms and elevator are all wheelchair accessible.
Facilities for children	Children's play room.
Accommodations nearby and any preferential rates	Holiday Inn. Preferential rates.
Languages	English, Italian, some Portuguese.
Religious/Cultural	Multi-faith.

## Funeral or Celebration of Life

Availability of clergyperson or officiant for funeral service	A list is available for each religion.
Cremation and/or burial	Both are available.
Service to send a body abroad	Yes.
Will your funeral planners visit the home or hospital to make arrangements?	Yes.
Counseling and bereavement supports	Clients are referred to a list of bereavement resources.

## Making Arrangements

Estimated cost for basic arrangements, i.e., all transportation of the body as required, cremation, a container, no service or visitation, and any cost of associated dispersements, documentation, and taxes.	Please contact one of their funeral directors. Can be reached 24 hours a day, 7 days a week.
First steps required to transfer the body from the hospital to the funeral home	A call from a representative of the family, a signature from the attending physician, and a release from the hospital.

# Heritage Funeral Centre

50 Overlea Blvd. Toronto M4H 1B6

Phone: 416-423-1000

Fax: 416-424-2074

Email: [Heritage@bellnet.ca](mailto:Heritage@bellnet.ca)

Web: <http://www.heritagefuneralcentre.ca>

## General Information

Brief Description	We are a fairly new funeral home in Toronto, having been open since 1997. We are the largest funeral home in Canada on one floor and we are very proud of our facilities. We have three chapels, private coffee lounges for each family, modern and spacious facilities as well as parking for more than 200 cars. We are a family owned business and none of funeral directors makes any commission or has any sales quotas to meet so we are able to make much more personal connections with the families that we serve. Our funeral home is growing rapidly and we continue to strive to exceed the expectations of each and every family that we serve.
Nearest subway or TTC	Take the 100 Flemington Park Bus from Broadview or take the 81 Bus from Pape Station.
Reception facilities	Three rooms can be used as reception facilities. Two smaller rooms hold about 75 people each comfortably. The very large room can hold approximately 150.
Catering and food	Provides catering, and food can be brought on premises.
Visitation facilities	Three main visitation rooms. The largest is a chapel with wooden pews that holds approximately 275 people. The middle room has vaulted ceilings and modern pot lighting and can hold approximately 175. The smallest room has a private entrance and a fireplace and can hold around 80.
Chapel or Area designated for funeral services	Any of the three rooms mentioned above can be used as a chapel to hold funeral services. Several smaller rooms can be used for private or more intimate services such as memorial services or funeral services for infants or children.
Parking facilities	Parking for more than 200 cars on site. Some covered parking is generally used for either immediate family members or those with disabilities. Conveniently located across from a plaza where there is parking for more than 300 cars at no cost.
Accessibility	The funeral home was built with this specifically in mind, completely on one level with no stairs anywhere on the premises.

Facilities for children	Several smaller rooms are available. They have a huge toy box.
Accommodations nearby and any preferential rates	None listed.
Languages	Greek, Korean, Philipino, Chinese, Macedonian.
Religious/Cultural	Multi-faith. Facility is close to both a Macedonian and Greek church, and serves the Eastern Orthodox Communities. They also serve a large portion of the Korean community.

### **Funeral or Celebration of Life**

Availability of clergyperson or officiant for funeral service	A list is available for each religion.
Cremation and/or burial	Both are available.
Service to send a body abroad	The staff specializes in this area.
Will your funeral planners visit the home or hospital to make arrangements?	Yes.
Counseling and bereavement supports	Clients are referred to a list of bereavement resources. Informal support offered by funeral home staff.

### **Making Arrangements**

Estimated cost for basic arrangements, i.e., all transportation of the body as required, cremation, a container, no service or visitation, and any cost of associated dispersements, documentation, and taxes.	They state that their pricing is an aspect that they take great pride in. As their prices change annually, it is better to have a family call or come into the facility to discuss pricing.
First steps required to transfer the body from the hospital to the funeral home	A call from a representative of the family, a signature from the attending physician, and a release from the hospital.

# Humphrey Funeral Home – A.W. Miles Chapel

1403 Bayview Avenue, Toronto M4G 3A8

1 km south of Eglinton Avenue East

Phone: 416-487-4523

Fax: 416-487-4395

Email: [bth@humphreymiles.com](mailto:bth@humphreymiles.com)

Web: <http://www.humphreymiles.com>

## General Information

Brief Description	Totally redecorated, inside and out, 2006-2007. We try very hard to meet the needs of everyone. We are just down Bayview Avenue from the hospital and minutes from Mt. Pleasant Cemetery and Crematorium. We have been established since 1879. We have preplanning counselors available.
Nearest subway or TTC	Davisville Subway stop, Bayview 11 bus across to Bayview Avenue.
Reception facilities	Accommodates 100 people.
Catering and food	Provides catering, and food can be brought on premises.
Visitation facilities	Several visitation rooms and coffee lounges. Can accommodate 100-150.
Chapel or Area designated for funeral services	The chapel can accommodate 130.
Parking facilities	Parking adjoining the funeral home, as well, an agreement with a church next door, and there is on-street parking allowed beside the funeral home.
Accessibility	A ramp from the parking lot into the building; a main-floor washroom, and an elevator.
Facilities for children	A children's area in one of the coffee lounges.
Accommodations nearby and any preferential rates	None listed.
Languages	Cantonese, Portuguese, French, Greek, English.
Religious/Cultural	Multi-faith.

## Funeral or Celebration of Life

Availability of clergyperson or officiant for funeral service	A list is available for each religion.
Cremation and/or burial	Both are available.
Service to send a body abroad	Yes.
Will your funeral planners visit the home or hospital to make arrangements?	Yes.
Counseling and bereavement supports	Clients are referred to a sponsored program.

## Making Arrangements

Estimated cost for basic arrangements, i.e., all transportation of the body as required, cremation, a container, no service or visitation, and any cost of associated disbursements, documentation, and taxes.	Will send two price packages by mail.
First steps required to transfer the body from the hospital to the funeral home	A call from a representative of the family, a signature from the attending physician, and a release from the hospital.

# Lynett Funeral Home

3299 Dundas St. West, Toronto

Phone: 416-767-1176

Fax: 416-760-0973

Email: [lynettfh@arbormemorial.com](mailto:lynettfh@arbormemorial.com)

Web: <http://www.lynettfuneralhome.ca>

## General Information

Brief Description	Founded in 1914 by Frank E. Lynett, Lynett Funeral Home has been an institution in Toronto's West end for over 90 years. Lynett's offers a wide range of services from traditional burial, to cremation, to immediate burial or cremation. We offer pre-arranged services, bereavement counseling, assistance with estate settlement, and many other services.
Nearest subway or TTC	Runnymede or Dundas West subway stations.
Reception facilities	They have rooms that can accommodate groups from 35 people to over 200.
Catering and food	Provides catering, and food can be brought on premises.
Visitation facilities	Lynett's has 5 different visitation rooms that can accommodate anywhere from 20 to over 200 people.
Chapel or Area designated for funeral services	They have a chapel that was recently renovated with state of the art audio and video equipment. The chapel can seat up to 200 people. They can broadcast the service to adjoining rooms that can accommodate another 200 people.
Parking facilities	Parking across the street from the funeral home, as well as on street parking that is free after 6 pm and weekends.
Accessibility	
Facilities for children	
Accommodations nearby and any preferential rates	Four Points Sheraton Hotel, Lakeshore & Windermere Ave.
Languages	Portuguese, Ukrainian, French, Spanish.
Religious/Cultural	Multi-faith.



## Funeral or Celebration of Life

Availability of clergyperson or officiant for funeral service	A list is available for each religion.
Cremation and/or burial	Both are available.
Service to send a body abroad	Yes.
Will your funeral planners visit the home or hospital to make arrangements?	Yes.
Counseling and bereavement supports	Offers “Arborcare,” a bereavement support group facilitated by grief counselor.

## Making Arrangements

Estimated cost for basic arrangements, i.e., all transportation of the body as required, cremation, a container, no service or visitation, and any cost of associated disbursements, documentation, and taxes.	Contact funeral home for an estimate.
First steps required to transfer the body from the hospital to the funeral home	A call from a representative of the family, a signature from the attending physician, and a release from the hospital.

# Moddcham Funeral Home

4242B Kingston Rd, Scarborough, Ontario, M1E 2M7

Kingston Rd & Galloway Rd

Phone: 416-282-6777

Fax: None listed

Email: None listed

Web: None listed

## General Information

Brief Description	None listed.
Nearest subway or TTC	Kingston Rd. Bus.
Reception facilities	None.
Catering and food	Allows catering services and/or allows food to be brought in.
Visitation facilities	2 Rooms, 75 people seating.
Chapel or Area designated for funeral services	Chapel for 75 People.
Parking facilities	For 100 cars.
Accessibility	Wheelchair accessibility pass system.
Facilities for children	None.
Accommodations nearby and any preferential rates	None listed.
Languages	None listed.
Religious/Cultural	Serves mostly Sri Lankans.

## Funeral or Celebration of Life

Availability of clergyperson or officiant for funeral service	A list is available for each religion.
Cremation and/or burial	Both are available.
Service to send a body abroad	Yes.
Will your funeral planners visit the home or hospital to make arrangements?	Yes.
Counseling and bereavement supports	Counselors available.

## Making Arrangements

Estimated cost for basic arrangements, i.e., all transportation of the body as required, cremation, a container, no service or visitation, and any cost of associated dispersements, documentation, and taxes.	It would vary depending on services requested.
First steps required to transfer the body from the hospital to the funeral home	A call from a representative of the family, a signature from the attending physician, and a release from the hospital.

# Morley Bedford Funeral Services

159 Eglinton Avenue West, Toronto M4R 1A8

Phone: (416) 489-8733 Fax: (416) 489-1810

Email: [alcrawford@morleybedford.ca](mailto:alcrawford@morleybedford.ca)

Web: <http://www.morleybedford.ca>

## General Information

Brief Description	Morley Bedford is a boutique style family owned and operated funeral home in central Toronto. We offer a wide variety of options to suit any needs or budget. We place emphasis on personalized tributes to truly reflect and honour a life lived.
Nearest subway or TTC	2 blocks west of Eglinton Subway Station.
Reception facilities	Reception room features leaded windows, fireplace, silver service, and verandah. It is available to groups of up to 100.
Catering and food	Provides catering, and food can be brought on premises.
Visitation facilities	Visitation facilities can accommodate groups of 250+. The tudor style building provides a warm and comfortable atmosphere for receiving friends.
Chapel or Area designated for funeral services	The non-denominational chapel features a Casavant organ and sound system. It can be configured to suit groups of 5-10, or groups of up to 90. There is an overflow area for groups larger than 90. Alternate venues can be used if required.
Parking facilities	The parking lot is available for guests, in addition to residential street parking and parking for 300 cars in a lot across the road.
Accessibility	The facilities are fully accessible.
Facilities for children	Children visiting the funeral home can make use of the lounge equipped with toys, books for all ages, television, VCR and movies, or game console.
Accommodations nearby and any preferential rates	Best Western Roehampton Hotel – 808 Mt. Pleasant Rd. 416-487-5101. Crowne Plaza – 1250 Eglinton Ave. E. 416-449-4111. Howard Johnson – 89 Avenue Rd. 416-964-1220.
Languages	English, French.
Religious/Cultural	Multi-faith.

## Funeral or Celebration of Life

Availability of clergyperson or officiant for funeral service	A list is available for each religion.
Cremation and/or burial	Both are available.
Service to send a body abroad	Yes.
Will your funeral planners visit the home or hospital to make arrangements?	Yes.
Counseling and bereavement supports	There is a lending library of bereavement resources. Clients are referred to a sponsored program.

## Making Arrangements

Estimated cost for basic arrangements, i.e., all transportation of the body as required, cremation, a container, no service or visitation, and any cost of associated disbursements, documentation, and taxes.	Costs are comparable with other funeral homes in the neighbourhood and will be discussed with families directly based on their specific needs.
First steps required to transfer the body from the hospital to the funeral home	A call from a representative of the family, a signature from the attending physician, and a release from the hospital.

# Murray E. Newbigging Funeral Home Ltd.

733 Mt. Pleasant Road, Toronto, ON M4S 2N4

Eglinton Ave. E. and Mt. Pleasant Road

Phone: 416-489-8811

Fax: 416-488-2816

Email: [menfh@rogers.com](mailto:menfh@rogers.com)

Web: <http://www.newbiggingfuneralhome.com/>

## General Information

Brief Description	Our family owned and run funeral home has been serving the Toronto area for almost sixty years. Paul Newbigging and his two adult children, Wendy and Andrew, are all licensed funeral directors who take pride in being there to help families through one of the toughest times in life. We feel that our funeral home's motto of "Our Family Serving Your Family" guides the services we offer. The funeral home itself is spacious with a contemporary home-like feeling with an abundance of natural light. The décor of the visitation rooms, chapel and reception rooms allow families to personalize the rooms to suit their needs.
Nearest subway or TTC	From the Yonge and Eglinton subway stop take any eastbound Eglinton bus to Mt. Pleasant (approx 3 mins). We are on the east side, ½ a block south of Eglinton Ave. E.
Reception facilities	Three reception rooms can handle intimate family gatherings of a few people up to larger gatherings of up to 100 people.
Catering and food	Catering referrals available, and families are free to use their own catering companies or to bring their own food. It is possible to obtain a liquor license for receptions if requested by the family.
Visitation facilities	Three visitation rooms that will hold from 0-100 people.
Chapel or Area designated for funeral services	The Chapel seats 80-90 people and there is an overflow room that is connected to the chapel by both a camera and sound system. If services require more space there is access to other locations around the community.
Parking facilities	35 parking spots on site with public parking for an additional 70 cars directly across the street.

Accessibility	Handicap accessible, with a fully accessible handicap washroom located on the main floor. As well, the visitation rooms, Chapel and reception rooms are all located on this main floor. For people who are hearing impaired one of their staff members is fluent in sign language.
Facilities for children	Children have a lounge with an assortment of toys to play with. All bathrooms have change tables.
Accommodations nearby and any preferential rates	The Roehampton Hotel (Best Western).
Languages	English, Estonian and sign language.
Religious/Cultural	Multi-faith serving a variety of different religious and cultural groups including the Estonian, Latvian and Iranian communities.

### **Funeral or Celebration of Life**

Availability of clergyperson or officiant for funeral service	A list is available for each religion.
Cremation and/or burial	Both are available.
Service to send a body abroad	Yes.
Will your funeral planners visit the home or hospital to make arrangements?	Yes.
Counseling and bereavement supports	Clients are referred to a list of bereavement resources.

### **Making Arrangements**

Estimated cost for basic arrangements, i.e., all transportation of the body as required, cremation, a container, no service or visitation, and any cost of associated disbursements, documentation, and taxes.	2007 Quote: The cost for such a service is \$1890.00 plus G.S.T. , the cost of a cremation container (\$190), the coroner (\$75), cremation at Forest Lawn (\$450), city registration (\$50) for a total of \$2768.40. Their sister company, Affordable Burials and Cremations, is a transfer service that offers “the most basic of service, i.e., all transportation of the body as required, cremation, a container, no service or visitation, and any cost of associated disbursements, documentation, and taxes” for a total of \$1138.92.
First steps required to transfer the body from the hospital to the funeral home.	A call from a representative of the family, a signature from the attending physician, and a release from the hospital.

# Ogden Funeral Homes Limited

4164 Sheppard Avenue East, Scarborough, ON M1S 1T3

East of Kennedy Rd., West of Midland

Phone: 416-293-5211 Fax: 416-298-4064

Email: [david@ogdenfh.com](mailto:david@ogdenfh.com)

Web: <http://www.ogdenfuneralhome.com>

## General Information

Brief Description	Our goal is to work with families of all cultural backgrounds and faiths helping them create a time of gathering for family and friends and a final ceremony that has purpose, value and meaning for everyone in attendance. Our goal is also to keep within each family's financial means. We are the largest single family-owned and family-operated funeral home in Toronto and GTA. We have been in the Scarborough area since 1948. We believe in the concept of family serving family. We have grown with the Scarborough community and believe in supporting local businesses, associations and religious organizations; together working to meet the many needs of our diverse, multicultural, international multi-faith community.
Nearest subway or TTC	TTC stops at corner of Midland and Sheppard.
Reception facilities	Two reception rooms are each able to accommodate approximately 80 to 100 people.
Catering and food	Catering referrals available. Food may be brought in during visitation. Renovations are nearly completed that will allow families to have food available during their visitation period.
Visitation facilities	There are eight visitation rooms of a variety of sizes. Three can accommodate approximately 200, three others can accommodate around 45 people each and two others can accommodate about 60 people each.
Chapel or Area designated for funeral services	The chapel will accommodate approximately 200 people along with in-house closed circuit television equipment for two overflow rooms with seating capacity of 150 each. It is also possible to have services in other community churches or places of specific meaning to the deceased or family members.
Parking facilities	There is parking on site for approximately 185 vehicles and additional parking next door at the Knox Presbyterian Church that will accommodate another 100 vehicles.



Accessibility	Fully wheelchair accessible including electronic touch pads at the front doors, handicap washrooms, accessibility to the chapel on the main floor, two elevators accessing the second floor, and designated handicap parking.
Facilities for children	Presently there is no specific children's area, however when permissible, a viewing area is available with a large drop down screen for video viewing during evening visitation periods.
Accommodations nearby and any preferential rates	Delta Toronto East, 2035 Kennedy Road 416-299-0562 (bereavement rate is available). <a href="mailto:lpierisharrison@deltahotels.com">lpierisharrison@deltahotels.com</a> Toronto East Travelodge, 20 Milner Business Court 416-299-9500 (bereavement rate \$72.00). <a href="http://www.travelodge.com">www.travelodge.com</a>
Languages	English, French, Tamil, Mandarin, Cantonese, HaKa (Chinese dialect), Spanish and Portuguese.
Religious/Cultural	Multi-faith.

### Funeral or Celebration of Life

Availability of clergy person or officiant for funeral service	A list is available for each religion.
Cremation and/or burial	Both are available.
Service to send a body abroad	Yes.
Will your funeral planners visit the home or hospital to make arrangements?	Yes.
Counseling and bereavement supports	Clients are referred to counselors and printed bereavement support material.

### Making Arrangements

Estimated cost for basic arrangements, i.e., all transportation of the body as required, cremation, a container, no service or visitation, and any cost of associated disbursements, documentation, and taxes.	2007 Quote: A basic funeral service (1700.00) with a wooden container (325.00) and cremation services (371.00), coroner's certificate (75.00), regulatory & licensing fees (15.00), municipal registration fees (50.00) and GST fees (121.50) would cost in the area of \$2657.50.
First steps required to transfer the body from the hospital to the funeral home	Verbal permission to transfer the deceased is accepted, providing there are two or more funeral directors who hear these instructions, a signature from the attending physician, and a release from the hospital.

# Paul O'Connor Funeral Home Ltd.

1939 Lawrence Ave. E., Scarborough ON M1R 2Y8

Warden & Pharmacy

Phone: 416-751-7890

Fax: 416-751-1390

Email: [Pauloconnorfuneralhome@rogers.com](mailto:Pauloconnorfuneralhome@rogers.com)

Web: [http://www.pauloconnor.vp.ca/en\\_CA](http://www.pauloconnor.vp.ca/en_CA)

## General Information

Brief Description	We provide all types of funeral – burials or cremations, memorial services & dispositions.
Nearest subway or TTC	Warden Subway, take Warden bus North to Lawrence, walk west on Lawrence for a block and a half.
Reception facilities	The reception room accommodates between 50 and 100.
Catering and food	Catering referrals available.
Visitation facilities	7 visiting rooms of different sizes.
Chapel or Area designated for funeral services	The Chapel can seat about 140 people.
Parking facilities	On-site parking for 60 cars.
Accessibility	Designated disability parking available and wheelchair accessible, including the washroom.
Facilities for children	There is no special area for children.
Accommodations nearby and any preferential rates	None listed.
Languages	English & French.
Religious/Cultural	Multi-faith.

## Funeral or Celebration of Life

Availability of clergyperson or officiant for funeral service	A list is available for each religion.
Cremation and/or burial	Both are available.
Service to send a body abroad	Yes.
Will your funeral planners visit the home or hospital to make arrangements?	Yes.
Counseling and bereavement supports	Clients are referred to a list of bereavement resources.

## Making Arrangements

<p>Estimated cost for basic arrangements, i.e., all transportation of the body as required, cremation, a container, no service or visitation, and any cost of associated dispersements, documentation, and taxes.</p>	<p>2007 Quote:          Traditional Funeral - \$3,510.00 plus a casket.          Immediate Disposition - \$1,500.00 plus casket.          Memorial Disposition - \$2,350.00 plus casket.          Clergy - \$200.00 Organist - \$150.00.          Cremation - \$434.60.          Burial permit - \$50.00.          Coroner - \$75.00.</p>
<p>First steps required to transfer the body from the hospital to the funeral home</p>	<p>A call from a representative of the family, a signature from the attending physician, and a release from the hospital.</p>

# R. S. Kane Funeral Home

6150 Yonge Street, Toronto, Ontario, M2M 3W9  
Two blocks south of Steeles on the west side of Yonge

Phone: 416-221-1159 Fax: 416-221-1586

Email: [info@rskane.ca](mailto:info@rskane.ca)

Web: <http://www.rskane.ca>

## General Information

Brief Description	Our facility is a two-story brick building with several fireplaces, a very warm interior and large gathering rooms. The facility is privately owned by Mr. John Kane who is in the building 5-6 days a week and guides the operation as his parents did when they opened in 1950. We provide a level of service not easily matched. We stand behind our commitment to the families and the community, which we are privileged to serve. R. S. Kane has been in business for over 55 years and serves a large North York and York Region community.
Nearest subway or TTC	Yonge Subway to Finch station. Steeles east or west bus north, and get off at Madawaska Ave & Yonge.
Reception facilities	Several reception rooms can accommodate up to 200 people. Two hostesses assist with the serving of food and refreshments.
Catering and food	Catering referrals are available, allowing families a selection of catering styles and prices. Any type of food can be brought in.
Visitation facilities	There are 4 rooms for visitations, accommodating large groups or smaller groups in a more intimate setting.
Chapel or Area designated for funeral services	The chapel is on the main level with seating for 180+. It can be expanded to accommodate an additional 200 people. There is a private family room with its own washroom. It also allows them to view the closing of the casket privately.
Parking facilities	Can accommodate over 100 cars. The lot is staffed at nights when necessary and prior to every funeral service.
Accessibility	The facility is completely accessible to disability, with washrooms on all three levels, and a public elevator.
Facilities for children	There is a TV and DVD in the lower lounge set up so kids can watch movies. There are several movies appropriate for children, or people can bring their own. Pop and hot chocolate are available.

Accommodations nearby and any preferential rates	Novotel (Yonge & Park Home) – closest hotel, no discount available. Hilton Hotel (Hwy 7 & Leslie) – preferred rate of \$139 per night when our name is used.
Languages	Chinese, Korean, Italian and now some Spanish. Translation available for other languages on request.
Religious/Cultural	Multi-faith, but with strong ties to the Chinese, Korean and European communities in the north end of the city.

### **Funeral or Celebration of Life**

Availability of clergyperson or officiant for funeral service	A list is available for each religion.
Cremation and/or burial	Both are available.
Service to send a body abroad	Yes.
Will your funeral planners visit the home or hospital to make arrangements?	Yes.
Counseling and bereavement supports	Clients are referred to a no-charge sponsored grief program, “Take Heart”, also affiliated to Hospice Thornhill. Clients are also referred to a no-charge follow up service that assists families with the financial issues. The funeral home also hosts annual seminar for caregivers. Referrals to other bereavement supports available.

### **Making Arrangements**

Estimated cost for basic arrangements, i.e., all transportation of the body as required, cremation, a container, no service or visitation, and any cost of associated disbursements, documentation, and taxes.	They state that they are not the least expensive in this area but feel strongly that their level of service, the services they include and their level of professionalism are very much justified.  2007 Quote: \$1495 is their current fee for the services identified, and disbursements are \$50 to register the death, and then whatever burial or cremation costs are incurred.
First steps required to transfer the body from the hospital to the funeral home	Verbal permission is acceptable, providing two or more funeral directors hear the instructions, signature from the attending physician, and a release from the hospital.

# Scarborough Funeral Centre

2966 Eglinton Ave. E., Scarborough, Ont. M1J 2E7

North side of Eglinton Ave. E., at Bellamy Road

Phone: 416-289-2558 Fax: 416-289-2240

Email: [funeralcentres@on.aibn.com](mailto:funeralcentres@on.aibn.com)

Web: <http://www.scarboroughfuneralcentre.com/home.html>

## General Information

Brief Description	Scarborough Funeral Centre is a Division of Humphrey Funeral Home / A.W. Miles Chapel, 1403 Bayview Avenue, Toronto. Family owned, we opened in 1999. We believe funerals do not need to be expensive. We treat all with dignity and respect. We give personal service in our modern, accessible, comfortable facility. Fully accessible to all. Ample Parking.
Nearest subway or TTC	T.T.C. buses along Eglinton Ave E. – every few minutes – Go Station across street.
Reception facilities	100 people.
Catering and food	Catering referrals available, and families are free to use their own catering companies or to bring their own food.
Visitation facilities	2 Large Visitation Rooms can easily accommodate 100 + people.
Chapel or Area designated for funeral services	The Chapel will accommodate up to 150 people.
Parking facilities	Can accommodate up to 50 cars.
Accessibility	Fully wheelchair accessible. Facility is all on one level. Accessible washrooms.
Facilities for children	Small play area with some toys.
Accommodations nearby and any preferential rates	Several hotels close by. No preferred rates.
Languages	English and Portuguese.
Religious/Cultural	Multi-faith.

## Funeral or Celebration of Life

Availability of clergyperson or officiant for funeral service	A list is available for each religion.
Cremation and/or burial	Both are available.
Service to send a body abroad	Yes.
Will your funeral planners visit the home or hospital to make arrangements?	Yes.
Counseling and bereavement supports	Clients are referred to a list of bereavement resources.

## Making Arrangements

Estimated cost for basic arrangements, i.e., all transportation of the body as required, cremation, a container, no service or visitation, and any cost of associated dispersements, documentation, and taxes.	2007 Quote: They call this their Dignity Cremation Service. Their cost is \$743.70, Basic Container is \$118.00, Cremation Fee at St. James' Crematorium is \$410.00. Coroner's fee is \$75.00, Death Registration fee is \$50.00. Total Cost is \$1473.00 which includes G.S.T.
First steps required to transfer the body from the hospital to the funeral home	A call from a representative of the family, a signature from the attending physician, and a release from the hospital.

# The Simple Alternative Funeral Centre - Pickering

1057 Brock Road, Pickering L1W 3T7  
 Brock Road & 401  
 Phone: 905-686-5589 Fax: 905-686-3677  
 Email: [info@thesimplealternative.ca](mailto:info@thesimplealternative.ca)  
 Web: <http://www.thesimplealternative.ca/>

## General Information

Brief Description	<p>The Simple Alternative facilitates a full range of arrangements from simple ceremonies to more elaborate or traditional funerals. Services can be held in our facility, in a church, or in any building that can accommodate a service (a favourite golf club, a Legion Hall, a theatre). The Simple Alternative (TSA) provides funeral arrangements to meet the multi-faceted needs of all cultures, faiths and traditions. Through our three TSA funeral centres (funeral homes) in Toronto, Mississauga and Pickering, we can provide a full range of funeral products and services. We value our role, reputation and responsibility in providing an important service to our community.</p> <ul style="list-style-type: none"> <li>• We put our customers first.</li> <li>• We treat our customers and each other with care and respect.</li> <li>• We act with integrity.</li> <li>• We encourage and recognize change and innovation.</li> <li>• We are one team.</li> </ul> <p>We bring some comfort to an otherwise difficult experience by offering each and every person compassion, care and choice. We make the memories of life and the wishes of loved ones the heart of everything we do.</p>
Nearest subway or TTC	From the 401 take the Brock Road exit and go south on Brock Road. We are the first building south of the 401 on the east side.
Reception facilities	For approximately 100 guests.
Catering and food	Provides catering, and food can be brought on premises.
Visitation facilities	The facilities include visitation suites, which can be set up in a chapel style or casual setting.



Chapel or Area designated for funeral services	The suites can be set up as a chapel for funeral services.
Parking facilities	Ample parking.
Accessibility	All of the facilities and are wheelchair accessible. In addition they have state of the art audio-visual equipment, which includes a microphone system to benefit the hearing impaired.
Facilities for children	They have coloring books and a quiet room for children attending services.
Accommodations nearby and any preferential rates	None listed.
Languages	No specific languages listed.
Religious/Cultural	Multi-faith.

### **Funeral or Celebration of Life**

Availability of clergyperson or officiant for funeral service	A list is available for each religion.
Cremation and/or burial	Both are available.
Service to send a body abroad	Yes.
Will your funeral planners visit the home or hospital to make arrangements?	Yes.
Counseling and bereavement supports	Clients are referred to a list of bereavement resources.

### **Making Arrangements**

Estimated cost for basic arrangements, i.e., all transportation of the body as required, cremation, a container, no service or visitation, and any cost of associated dispersements, documentation, and taxes.	Would rather not quote for a basic service as it may not reflect the wishes of the family and the prices change. The funeral home takes pride in not pressuring families into purchasing anything they do not want or need.
First steps required to transfer the body from the hospital to the funeral home	A call from a representative of the family, a signature from the attending physician, and a release from the hospital.

# The Simple Alternative Funeral Centre - Toronto

275 Lesmill Road, North York M3B 2V1

Leslie & 401

Phone: 416-441-1580 Fax: 416-441-1030

Email: [info@thesimplealternative.ca](mailto:info@thesimplealternative.ca)

Web: <http://www.thesimplealternative.ca/>

## General Information

Brief Description	<p>The Simple Alternative facilitates a full range of arrangements from simple ceremonies to more elaborate or traditional funerals. Services can be held in our facility, in a church, or in any building that can accommodate a service (a favourite golf club, a Legion Hall, a theatre). The Simple Alternative (TSA) provides funeral arrangements to meet the multi-faceted needs of all cultures, faiths and traditions. Through our three TSA funeral centres (funeral homes) in Toronto, Mississauga and Pickering, we can provide a full range of funeral products and services. We value our role, reputation and responsibility in providing an important service to our community.</p> <ul style="list-style-type: none"> <li>• We put our customers first.</li> <li>• We treat our customers and each other with care and respect.</li> <li>• We act with integrity.</li> <li>• We encourage and recognize change and innovation.</li> <li>• We are one team.</li> </ul> <p>We bring some comfort to an otherwise difficult experience by offering each and every person compassion, care and choice. We make the memories of life and the wishes of loved ones the heart of everything we do.</p>
Nearest subway or TTC	<p>York Mills subway station. Take eastbound Graydon Hall bus (#12) to Duncan Mill Road. Getting off at Lesmill Road to TSA.</p> <p>Pape subway station. Take Don Mills Road bus (#25) north to Duncan Mill Road. Cross road to the westbound Graydon Hall Bus (#122). Getting off at Lesmill Road.</p>
Reception facilities	For approximately 100 guests.
Catering and food	Provides catering, and food can be brought on premises.
Visitation facilities	The facilities include visitation suites, which can be set up in a chapel style or casual setting.

Chapel or Area designated for funeral services	The suites can be set up as a chapel for funeral services.
Parking facilities	Ample parking.
Accessibility	All of our facilities and are wheelchair accessible. In addition we have state of the art audio-visual equipment which includes a microphone system to benefit the hearing impaired.
Facilities for children	They have coloring books and a quiet room for children attending services.
Accommodations nearby and any preferential rates	None listed.
Languages	No specific languages listed.
Religious/Cultural	Multi-faith.

### **Funeral or Celebration of Life**

Availability of clergyperson or officiant for funeral service	A list is available for each religion.
Cremation and/or burial	Both are available.
Service to send a body abroad	Yes.
Will your funeral planners visit the home or hospital to make arrangements?	Yes.
Counseling and bereavement supports	Clients are referred to a list of bereavement resources.

### **Making Arrangements**

Estimated cost for basic arrangements, i.e., all transportation of the body as required, cremation, a container, no service or visitation, and any cost of associated dispersements, documentation, and taxes.	Would rather not quote for a basic service as it may not reflect the wishes of the family and the prices do change. The funeral homes notes that they take pride in not pressuring families into purchasing anything they do not want or need.
First steps required to transfer the body from the hospital to the funeral home	A call from a representative of the family, a signature from the attending physician, and a release from the hospital.

# Turner & Porter Funeral Directors Limited

## Roncesvalles Chapel

436 Roncesvalles Avenue, Toronto, ON M6R 2N2

Roncesvalles and Howard Park Avenue

Phone: 416-533-7954 Fax: 416-533-7957

Email: [roncesvalles@turnerporter.ca](mailto:roncesvalles@turnerporter.ca)

Web: <http://www.turnerporter.ca/welcome.html>

### General Information

Brief Description	Family owned and operated for over 133 years in the 6 <sup>th</sup> generation of the Porter Family. Our philosophy continues – to provide dignified services and give people what they want. Attention to the details of service makes us unique.
Nearest subway or TTC	Not listed.
Reception facilities	On premises, can accommodate post funeral receptions up to approx. 75 people. Beyond the funeral home, they have many options for families who require larger facilities.
Catering and food	Provides catering, and food can be brought on premises.
Visitation facilities	The facilities have accommodated very large attendance for visitation and services. At times, they have accommodated several hundred guests for visitations. When families are expecting a large attendance for a service, they will offer larger and more suitable facilities in the immediate area.
Chapel or Area designated for funeral services	The Chapel can accommodate approximately 100 people.
Parking facilities	There is a parking lot on their property as well as close neighbourhood lots.
Accessibility	There are no restrictions for wheelchair accessibility. They can make necessary arrangements when they are made aware of any special needs of their guests.
Facilities for children	There is an area where children can be “kept busy” and/or watch a DVD movie.
Accommodations nearby and any preferential rates	Four Points Sheraton, Lakeshore/Winderemere. Old Mill Inn. Valhalla Inn.
Languages	Polish, Ukrainian and Portuguese.
Religious/Cultural	Polish, Lithuanian, Italian, Croatian & Ukrainian communities.

## Funeral or Celebration of Life

Availability of clergyperson or officiant for funeral service	A list is available for each religion.
Cremation and/or burial	Both are available.
Service to send a body abroad	Yes.
Will your funeral planners visit the home or hospital to make arrangements?	Yes.
Counseling and bereavement supports	Clients are referred to a bereavement support group entitled C.O.P.E.S. (Community Of People Extending Support), which is offered 4 times each year in Etobicoke and Mississauga.

## Making Arrangements

Estimated cost for basic arrangements, i.e., all transportation of the body as required, cremation, a container, no service or visitation, and any cost of associated dispersements, documentation, and taxes.	Not listed but prices available on request.
First steps required to transfer the body from the hospital to the funeral home	A call from a representative of the family, a signature from the attending physician, and a release from the hospital.

# Turner & Porter Funeral Directors Limited

## Yorke Chapel

2357 Bloor Street West, Toronto, ON M6S 1P4

Located 2 blocks east of the Jane subway on the south side

Phone: 416-767-3153 Fax: 416-767-5986

Email: [yorkechapel@turnerporter.ca](mailto:yorkechapel@turnerporter.ca)

Web: <http://www.turnerporter.ca/welcome.html>

### General Information

Brief Description	Family owned and operated for over 133 years in the 6 <sup>th</sup> generation of the Porter Family. Our philosophy continues - to provide dignified services and give people what they want. Attention to the details of service makes us unique.
Nearest subway or TTC	Not listed.
Reception facilities	On premises, can accommodate post funeral receptions up to approx. 75 people. Beyond the funeral home, they have many options for families who require larger facilities.
Catering and food	Provides catering, and food can be brought on premises.
Visitation facilities	The facilities have accommodated very large attendance for visitation and services. At times, they have accommodated several hundred guests for visitations. When families are expecting a large attendance for a service, they will offer larger and more suitable facilities in the immediate area.
Chapel or Area designated for funeral services	The Chapel can accommodate approximately 175 people.
Parking facilities	There are 2 parking lots on their property as well as close neighbourhood lots.
Accessibility	There are no restrictions for wheelchair accessibility. They can make necessary arrangements when they are made aware of any special needs of their guests.
Facilities for children	There is an area where children can be “kept busy” and/or watch a DVD movie.
Accommodations nearby and any preferential rates	Four Points Sheraton, Lakeshore/Winderemere. Old Mill Inn. Valhalla Inn.
Languages	Polish, Ukrainian and Portuguese.
Religious/Cultural	Polish, Lithuanian, Italian, Croatian & Ukrainian communities.

## Funeral or Celebration of Life

Availability of clergyperson or officiant for funeral service	A list is available for each religion.
Cremation and/or burial	Both are available.
Service to send a body abroad	Yes.
Will your funeral planners visit the home or hospital to make arrangements?	Yes.
Counseling and bereavement supports	Clients are referred to a bereavement support group entitled C.O.P.E.S. (Community Of People Extending Support), which is offered 4 times each year in Etobicoke and Mississauga.

## Making Arrangements

Estimated cost for basic arrangements, i.e., all transportation of the body as required, cremation, a container, no service or visitation, and any cost of associated dispersements, documentation, and taxes.	Not listed but prices available on request.
First steps required to transfer the body from the hospital to the funeral home	A call from a representative of the family, a signature from the attending physician, and a release from the hospital.

# Ward Funeral Home- Weston Chapel

2035 Weston Road, Toronto M9N 1X7

Weston between Lawrence and 401

Phone: 416-241-4618 Fax: 416-241-0415

Email: [Weston@wardfh.com](mailto:Weston@wardfh.com)

Web: <http://www.wardfuneralhome.com>

## General Information

Brief Description	As well as our Weston (West Toronto) location, we have funeral home facilities serving the communities of Woodbridge, Brampton, and Oakville. Our company is family owned and now operated by the fourth generation of the Ward family, which began funeral service in 1914. Each location serves unique communities and our experience and breadth of knowledge is vast. We are in prominent locations in each community, easily accessible, with ample parking, and large comfortable facilities. Our staff is community-oriented and able to accommodate any reasonable request. The Ward family and their caring staff of understanding professional men and women, who themselves represent varied traditions and cultures, are here to assist. From this perspective, it is our commitment to respect families' expectations as well as cultural and religious needs. Dedicated to meaningful, dignified and professional service, Ward Funeral Home is a caring community partner involved in many aspects of neighbourhood health and wellbeing.
Nearest subway or TTC	TTC bus Weston #89 originating at Keele Station on the Bloor line.
Reception facilities	Varying in each location to onsite or nearby facilities able to accommodate numbers from 50 to 200 depending on venue.
Catering and food	Provides catering or allows food to be brought in.
Visitation facilities	Several visitation areas available, accommodating small to very large gatherings.
Chapel or Area designated for funeral services	The Chapel seats approximately 100. In some instances, additional space is available to allow for overflow seating in addition to the main chapel area.
Parking facilities	Ample off-street parking, staffed to assist guests upon their arrival.



Accessibility	Wheelchair accessible facilities, entrances, washroom facilities, and chapels. Additionally, elevator equipped buildings are available to all guests.
Facilities for children	Quiet rooms, play rooms, and facilities generally available upon request.
Accommodations nearby and any preferential rates	Marriot (Dixon Rd), Ramada (Wilson Ave), Quality Inn (Islington /401), Howard Johnson (Keele/401), all providing corporate rates for clients of Ward Funeral Home.
Languages	English, Italian, Spanish, French.
Religious/Cultural	Multi-faith.

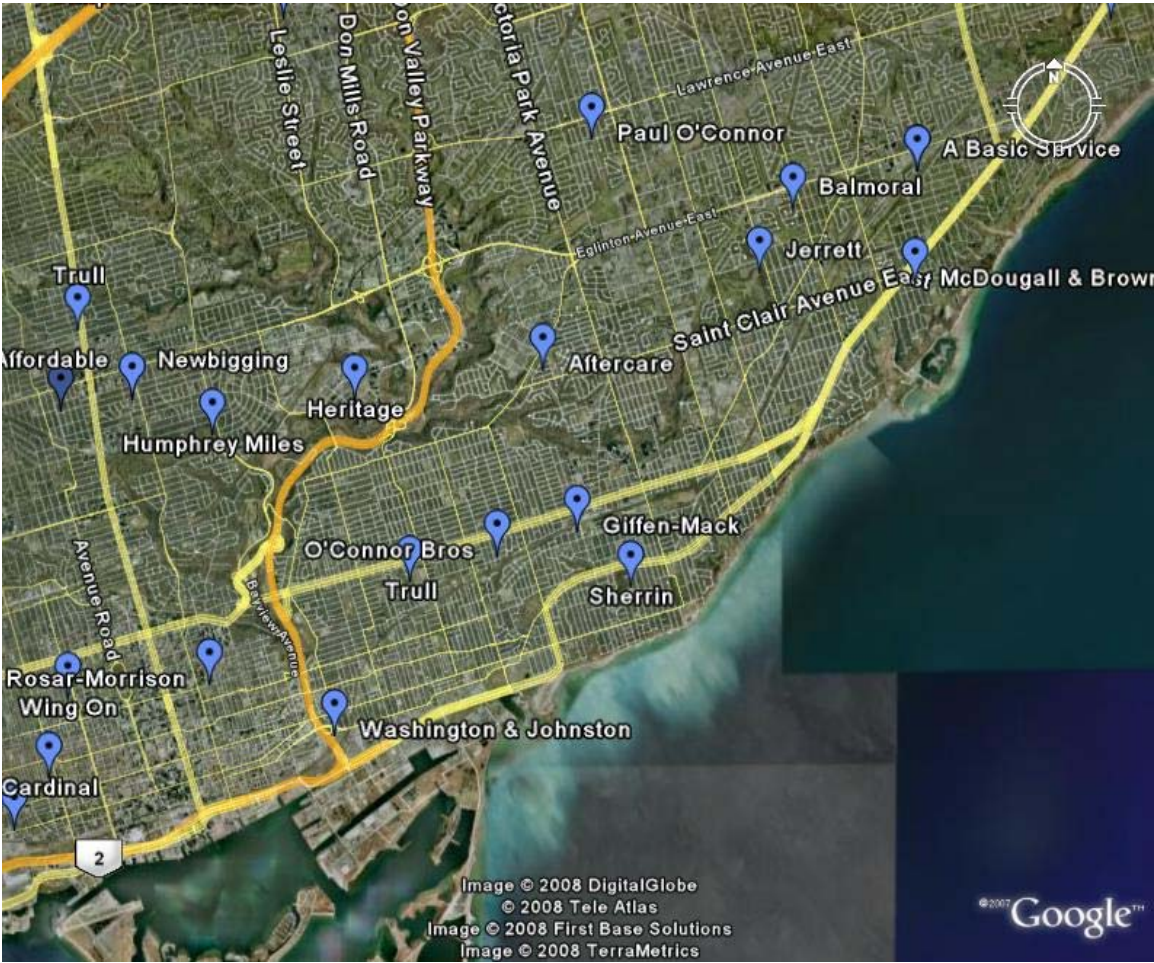
### **Funeral or Celebration of Life**

Availability of clergyperson or officiant for funeral service	A list is available for each religion.
Cremation and/or burial	Both are available.
Service to send a body abroad	Yes.
Will your funeral planners visit the home or hospital to make arrangements?	Yes.
Counseling and bereavement supports	Clients are referred to a sponsored program.

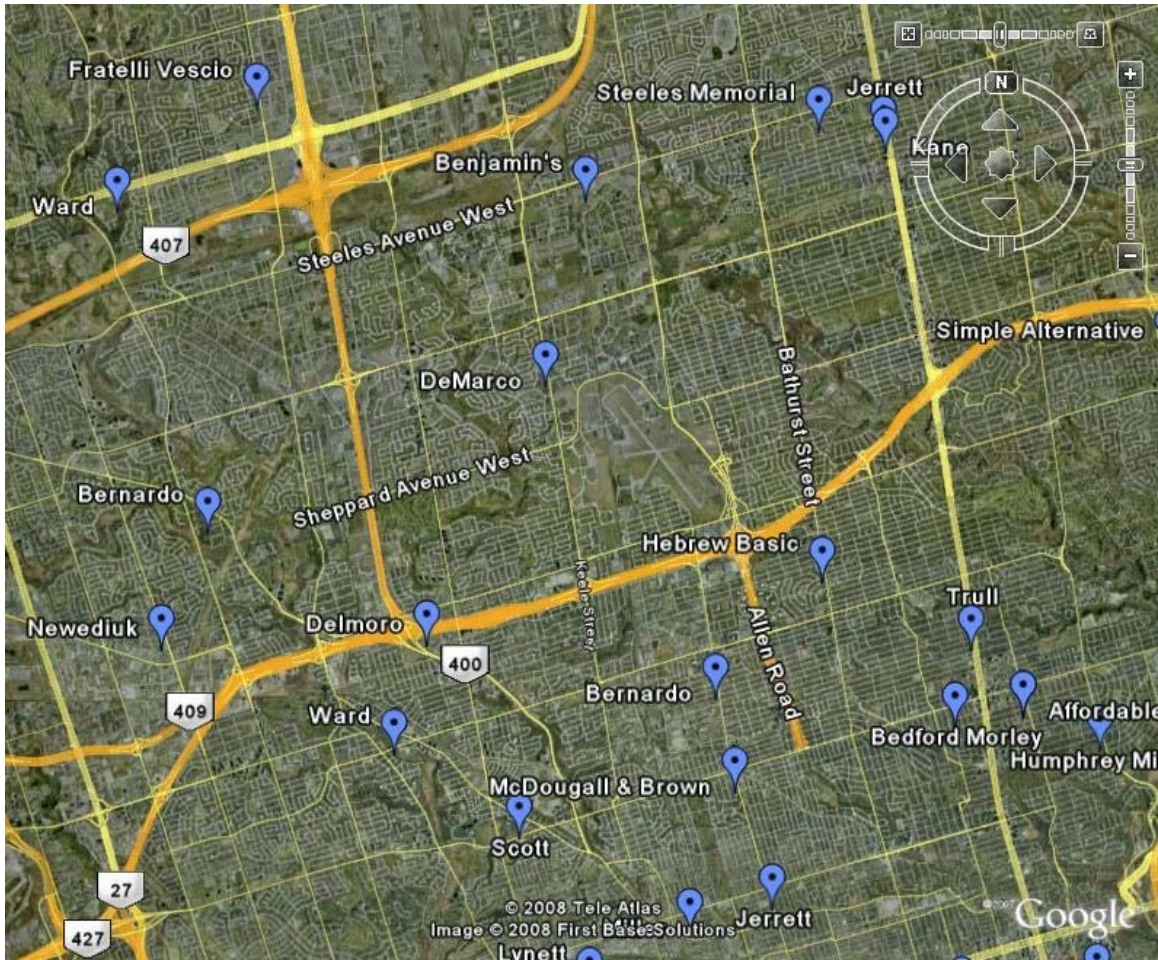
### **Making Arrangements**

Estimated cost for basic arrangements, i.e., all transportation of the body as required, cremation, a container, no service or visitation, and any cost of associated dispersements, documentation, and taxes.	2007 Quote: Basic services range in cost from just under \$1500 to approximately \$2800 dependent on casket or container choice, tax, and personalized additions (ie newspaper notices, etc.).
First steps required to transfer the body from the hospital to the funeral home	Clear authorized direction from the executor or nearest next of kin, a signature from the attending physician, and a release from the hospital.

# Map 1



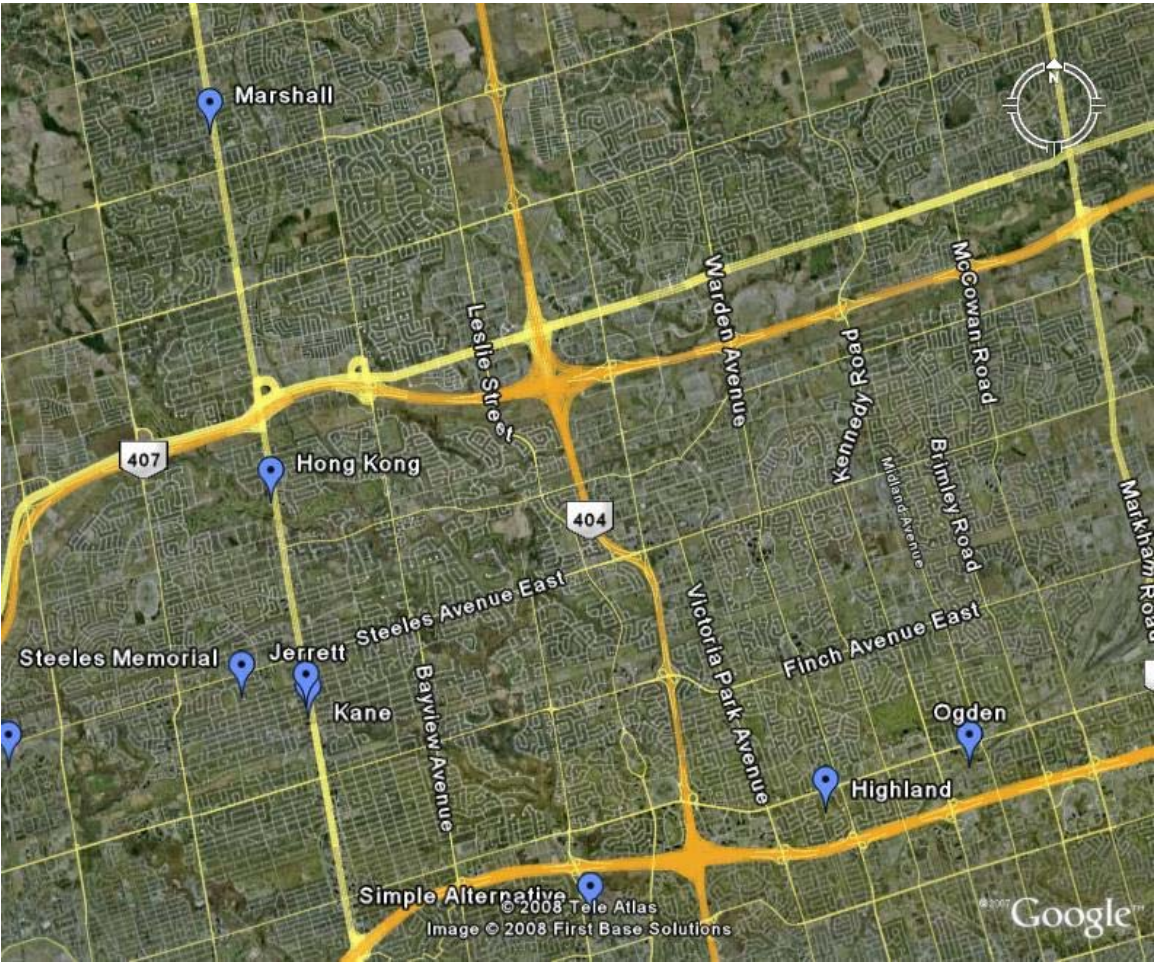
# Map 2



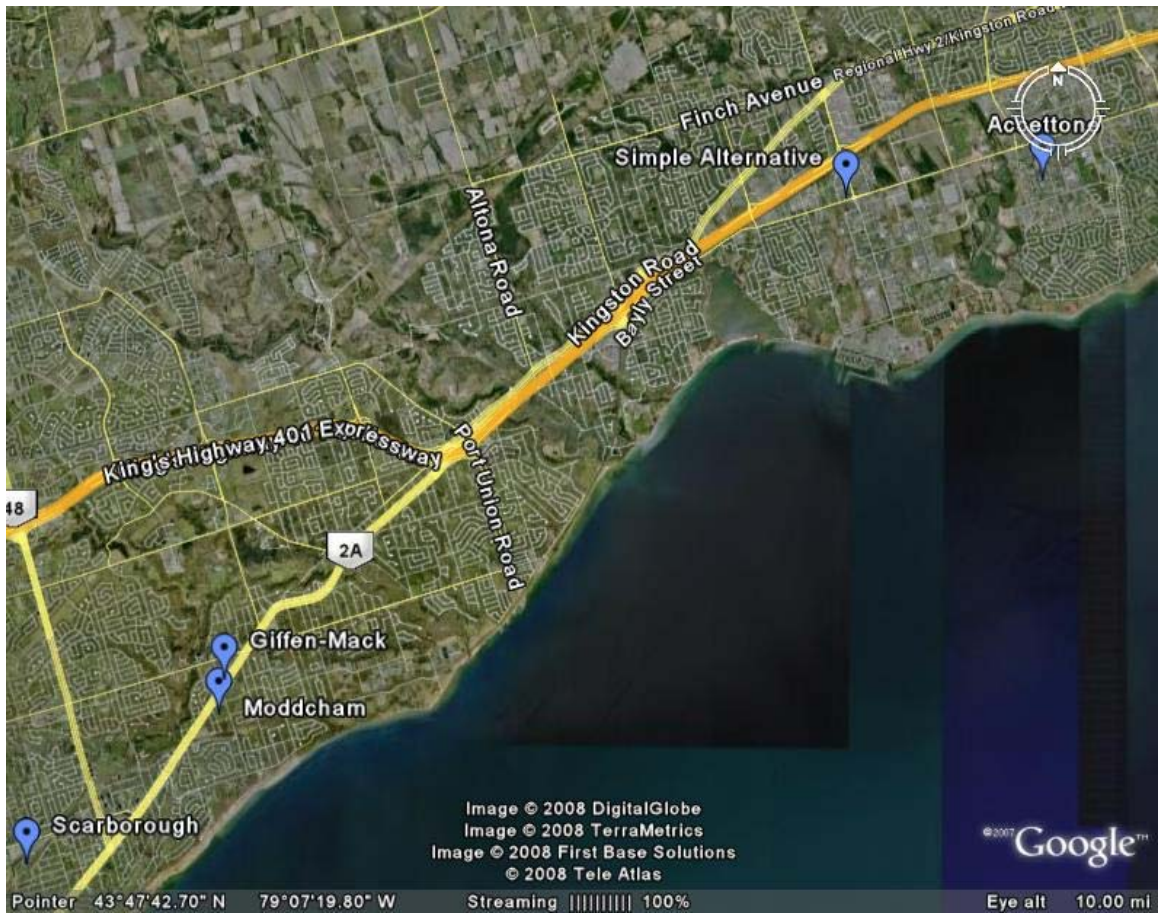
# Map 3



# Map 4



# Map 5



## Other Resources

**Other Ontario Funeral Homes:**

[http://www.funeralboard.com/PublicUploads/223354BusinessDirectory\\_2007.pdf](http://www.funeralboard.com/PublicUploads/223354BusinessDirectory_2007.pdf)

**Funeral Board: Regulates Funerals in Ontario**

<http://www.funeralboard.com/>

**Financial assistance for Funerals from Toronto Social Services:**

[http://www.toronto.ca/socialservices/pdf/funeral\\_brochure.pdf](http://www.toronto.ca/socialservices/pdf/funeral_brochure.pdf)

**What to do when Someone Dies: Pensions, Benefits, and Personal Finance**

[http://www.gov.on.ca/ont/portal!/ut/p/.cmd/cs/.ce/7\\_0\\_A/.s/7\\_0\\_252/ s.7\\_0\\_A/7\\_0\\_252/ 1/en?docid=012340](http://www.gov.on.ca/ont/portal!/ut/p/.cmd/cs/.ce/7_0_A/.s/7_0_252/ s.7_0_A/7_0_252/ 1/en?docid=012340)

**Bereaved Families of Ontario – Toronto**

<http://www.bfotoronto.ca/index.asp>